



FIGURE 65. Photographic Viewpoint Locations -
Local Views 30 & 31

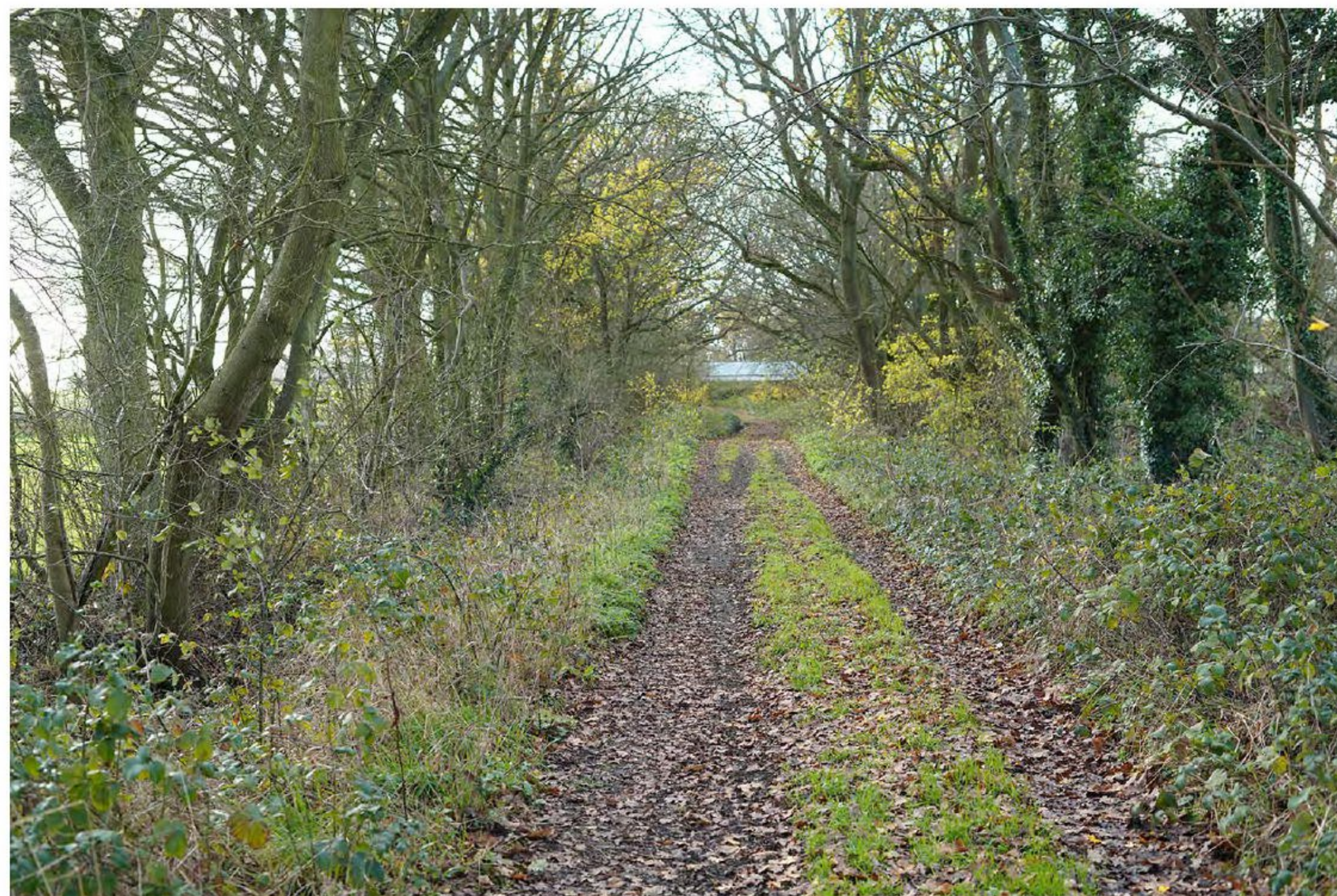


FIGURE 63. View 30

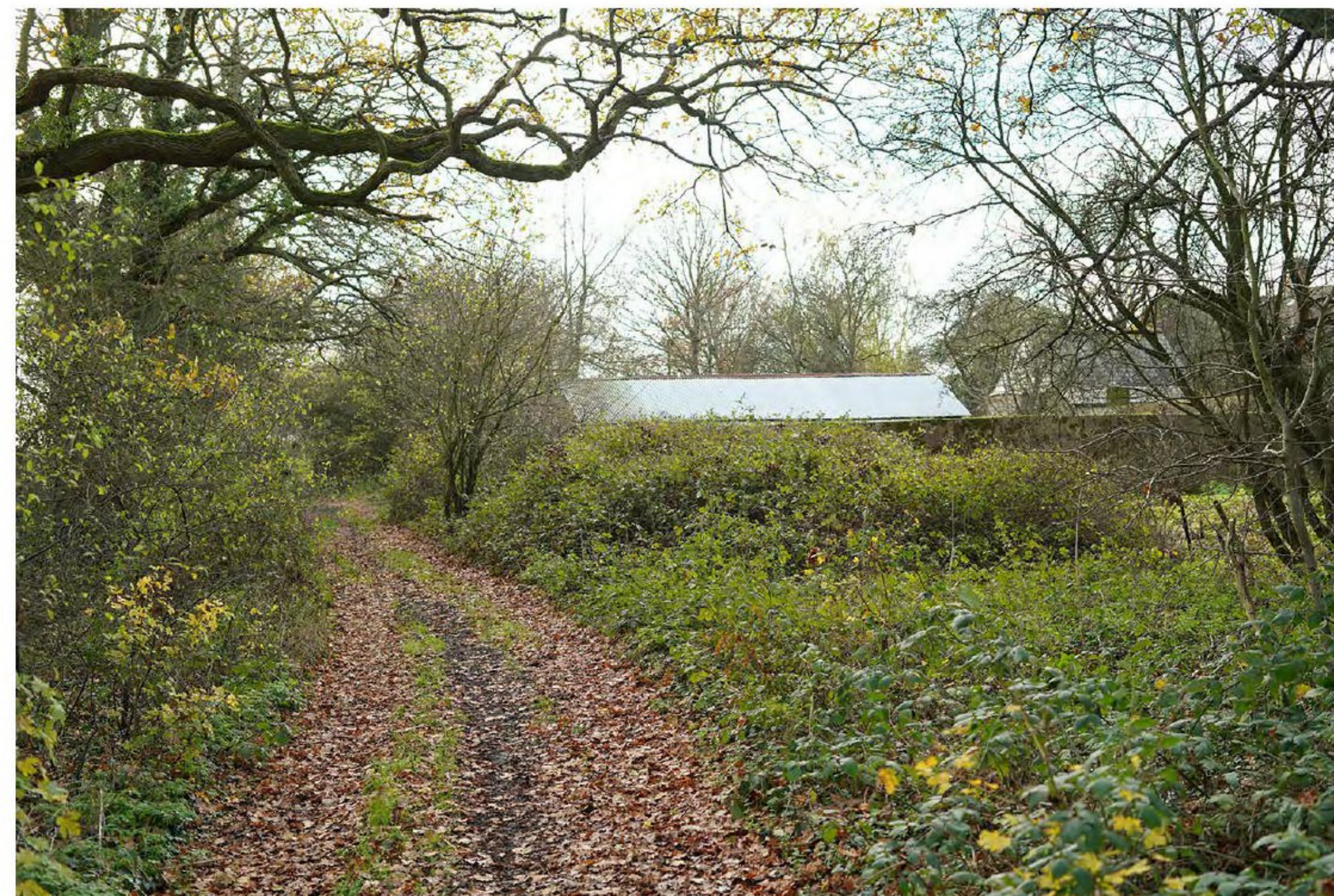


FIGURE 64. View 31



FIGURE 68. Photographic Viewpoint Locations -
Local Views 32 & 33



FIGURE 66. View 32



FIGURE 67. View 33

VIEWPOINTS 34-39

Viewpoints 34-39 provide supplementary views taken along the A28, including the approach to the first phases of Chilmington Green and the emerging urban form, signalling the new road access.



FIGURE 71. Photographic Viewpoint Locations -
Local Views 34 & 35



FIGURE 69. View 34



FIGURE 70. View 35

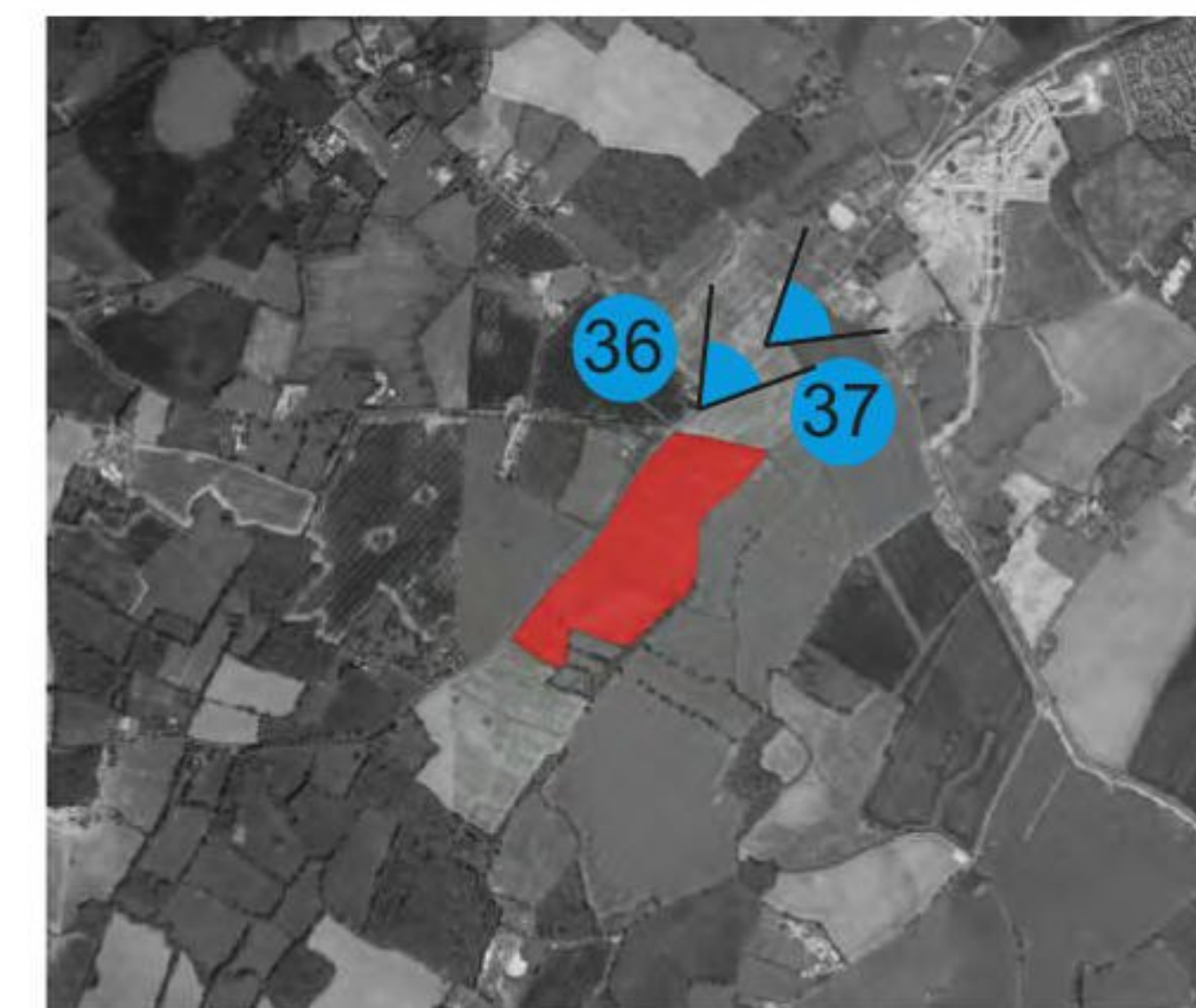


FIGURE 74. Photographic Viewpoint Locations -
Local Views 36 & 37



FIGURE 72. View 36



FIGURE 73. View 37



FIGURE 77. Photographic Viewpoint Locations -
Local Views 38 & 39



FIGURE 75. View 38



FIGURE 76. View 39