

# ASHFORD FOR YOU

Issue 14 | Autumn 2021

YOUR BOROUGH, YOUR MAGAZINE

## REMEMBERING THE FEW

Memorial Gardens tribute

## CUTTING CARBON CONSULTATION

## WORLD CLASS DANCE ACADEMY

## WIN

- Stour Centre annual membership
- A free range Christmas turkey
- Dine out at two great new restaurants



## Trusted to care Award winning care homes

Our highly trained care home teams are specialists in residential, nursing, dementia and respite care, so whatever your needs and personal preferences, we're here to help you and your family at every step of the journey.

If you're considering care for yourself or a loved one, call **01233 884359** or email [nicola.young@careuk.com](mailto:nicola.young@careuk.com)

Enjoy three weeks' care for the price of two this summer\*



Montfort Manor care home  
Ashford, Kent  
[careuk.com/montfort-manor](http://careuk.com/montfort-manor)

\*Terms and conditions apply – speak to us or visit our website for more information.



## Welcome



Welcome to another packed edition of Ashford For You, where there's a strong focus on the green agenda and sustainable development in our borough.

The launch of our carbon neutral consultation gives readers the chance to have your say on our approach to securing a greener future, while we also report on moves to extend the electric vehicle charging point network.

We mark National Recycling Week with a review of initiatives taking place closer to home and there is a spotlight on our proposed walking and cycling strategy and what it means for you. Our tranquil green spaces are also featured, while we report on several local businesses which have taken advantage of specialist funding from the Experience Development Programme to develop new tourism products with an emphasis on nature.

I'm delighted to see that the council had such a great response to our competition inviting readers to send in wildlife photographs. They are amazing and I look forward to seeing some of them on our new trucks.

Ashford borough continues to build back stronger in the wake of the pandemic and with more evidence of investment and expansion among local businesses, there are encouraging signs that our local economy continues to claw back lost ground as we move ahead.

*Tracey Kerly*

**Tracey Kerly**  
Chief executive, Ashford Borough Council

## Contents

### News 4-6

How we supported businesses during the pandemic, sign up to our e-newsletter and the latest Loveashford events.

### Leisure update 7

Latest on improvements at Singleton Environment Centre.

### Innovation in tourism 8

A new fund is supporting leisure businesses with a difference.

### Best foot forward 9

Landmark moment for the Jasmin Vardimon international dance academy.

### Carbon neutral consultation 10-11

Your chance to help shape our approach to a greener future; investment in more electric vehicle charging points.

### Memorials to those we have lost... 12-13

Ashford's Memorial Gardens are home to the Baby Memorial Garden, while a floral Spitfire display pays tribute to the Few...

### Environment special 14-16

Recycling tips, tree planting and your beautiful wildlife photographs.

### An oasis of tranquillity 17

Bybrook Nature Reserve is an urban haven.

### What's On 18-19

Tenterden Folk Festival, Godinton House and more...

### Walking and cycling strategy 20

Spotlight on sustainable transport.

### Victoria Park plus competition 21

It's a busy autumn in our favourite green space.

### Competitions 22

Win your Christmas turkey plus fabulous dining experiences at Elwick Place.

### Editorial

Dean Spurrell, Jeff Sims, Samantha Stone, Alice Pritchard, Alan Ng, Leanne Benn

### Design

Emma Spicer, Ben Jones, Deborah Caplan

### Printed by

William Gibbons & Sons Ltd.

Front cover image courtesy of Emily Heritage  
Heritage and Holland Photography.

### Advertising Sales

Call: 01233 330543 or  
Email: [media@ashford.gov.uk](mailto:media@ashford.gov.uk)

**Please note:** For current information on the Civic Centre opening hours and face-to-face appointments please visit: [www.ashford.gov.uk/contact-us/get-in-touch-another-way](http://www.ashford.gov.uk/contact-us/get-in-touch-another-way)

### Get in touch!

To comment on this magazine, to tell us what you'd like to see more of and maybe to submit an article of your own:

Email: [media@ashford.gov.uk](mailto:media@ashford.gov.uk) (subject line NEWS) or  
Write to: Ashford Borough Council, Civic Centre,  
Tannery Lane, Ashford, Kent, TN23 1PL

**nextdoor** AshfordBoroughCouncil

[ashfordboroughcouncil](https://www.youtube.com/ashfordboroughcouncil) @Ashfordbc [ashfordcouncil](https://twitter.com/ashfordcouncil)

### Customer Services

Email: [customer.care@ashford.gov.uk](mailto:customer.care@ashford.gov.uk) or Call: 01233 331111  
or write to us at the above address.

Find your borough councillor: [www.ashford.gov.uk/councillors](http://www.ashford.gov.uk/councillors)

## Letting your property should be as easy as ABC...

For landlords, especially those new to the lettings market, renting out a property can be a minefield but there's a simple solution. ABC Lettings already successfully manages more than 300 properties across Ashford, Folkestone and Hythe boroughs.

Every year countless residential property owners have their first taste of letting a house or flat to private tenants. Perhaps they have been left property in a will or have bought it as an investment. For many it will be a painless experience but for others trouble lurks.

Even seasoned landlords can find negotiating a path through the lettings market daunting but you can avoid the pitfalls. Not all lettings agencies are the same so what should you look for in choosing one that's right for you?

We take care of the process from start to finish. We know and assess all our tenants and are a no hassle, no hidden cost letting service, and are not motivated by profit.



Our experienced managers offer you the security of working with an organisation with a reputation for a careful and considered approach.

Our fully managed service includes:

- A guaranteed rental income, paid monthly and in advance
- We tenant your property within two weeks (subject to all necessary checks)
- Boiler breakdown cover and annual gas safety check
- Inventory / check out
- 24-hour emergency repair support
- Routine property inspections
- Tenancy renewals

### Contact us today!

If you are a landlord, or thinking of becoming a landlord, email the team at [abclettings@ashford.gov.uk](mailto:abclettings@ashford.gov.uk) or call us on 01233 330811.



# Supporting local businesses through the pandemic

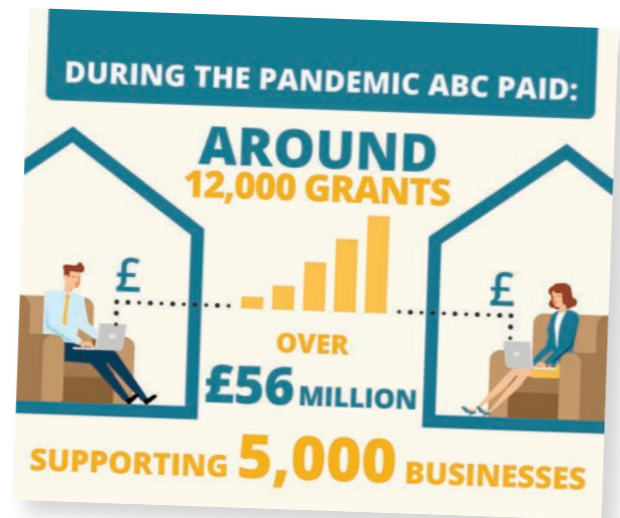
Around 12,000 business support grants, totalling £56 million have been paid out since April 2020 – supporting over 5,000 businesses in the borough. The council has been supporting local businesses by processing and administering the many government grant schemes since the first national lockdown in March 2020.

## Key highlights:

- **Small Business Grants:** 1,757 grants totalling £17,570,000
- **Retail/Hospitality/Leisure Grants:** 560 grants totalling £10,205,000
- **Discretionary Grants:** 175 grants totalling £1,351,000
- **Local Restrictions Support Grants (LRSG):** 5,772 grants to 1,136 businesses totalling £14,280,654
- **Additional Restrictions Grant (ARG):** 2,687 grants to 448 businesses totalling £4,823,350
- **Restart:** 1,033 grants totalling £8,042,717

The work of our Revenues and Benefits and Economic Development teams, assisted by colleagues from across the council, has helped hundreds of businesses stay afloat. Officers contacted businesses to confirm their eligibility for support. Those eligible for grant support because they were required to close or significantly affected by the closure of other businesses were able to apply through our website.

Cllr Neil Bell, former portfolio holder for Finance, praised their work: "We know that many businesses were appreciative of how quickly the grants were paid out. Many people were aware of central government providing the scheme, but few will realise it was local government who administered it. I would like to thank officers who worked tirelessly to help businesses to get the financial support they needed."



We have paid out 5,772 Local Restrictions Support Grants (LRSG) to 1,136 businesses, a total of £14,280,654m. These grants have been paid to businesses who have had to be closed during the various lockdowns since November 2020.

Alongside the LRSG scheme, officers assessed applications under the Additional Restrictions Grant (ARG). This was for businesses who have suffered financial loss but were not covered by the LRSG scheme. More than £4,823,350m was given out.

From the start of April, as lockdown restrictions eased, many businesses were also eligible for the Restart grant. A total of £8,042,717m was paid to 1,033 businesses. The government grant scheme has now closed but more information on the support available to businesses is available at [www.ashford.gov.uk/business](http://www.ashford.gov.uk/business)



## Fly tippers beware

Fly tipping is a problem that continues to blight our beautiful countryside. However help is at hand and we're pleased to announce that the council now has a full time Environmental Enforcement Team.

Their time will be spent investigating and enforcing the rules related to incidences of fly-tipping, commercial waste duty of care and littering across the borough.

So don't forget if you are hiring any contractor to carry out work on your home or dispose of your waste you must ensure they have a waste carriers licence otherwise you may end up with a £400 fine.

You can do this by checking at [www.environment.data.gov.uk/public-register/view/search-waste-carriers-brokers](http://www.environment.data.gov.uk/public-register/view/search-waste-carriers-brokers)

## Tourism survey

Calling Ashford borough residents, we need your help! We're working with Visit Kent and Kent Downs AONB to understand your views on how tourism affects you and your local area. It will only take 10 minutes to complete. To find out more and to complete the survey visit [www.kentdowns.org.uk/tourismsurvey](http://www.kentdowns.org.uk/tourismsurvey)

## Read all about it!

Do you want the latest council news delivered straight to your inbox? Nearly 500 of you already get the news hot off the press, but we want to make sure we're reaching as many people across the borough as possible.

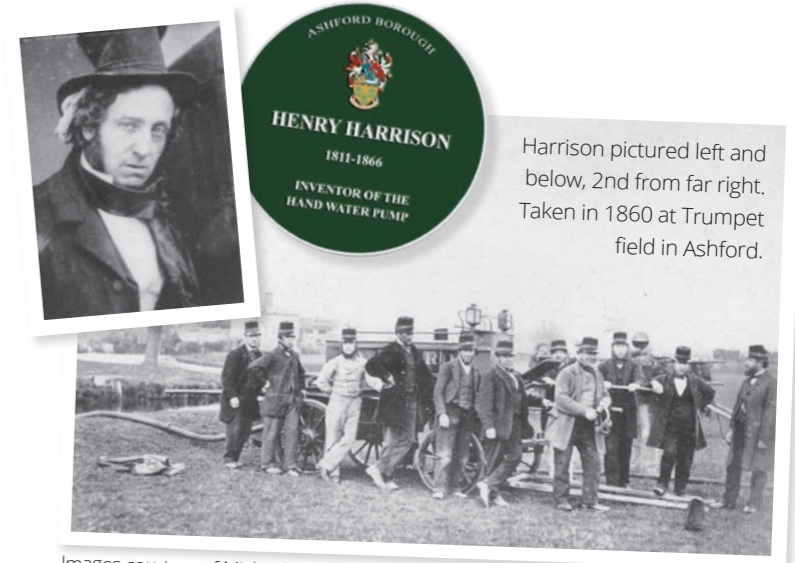
If you want access to not just the latest news but also exclusive information from our partners, competitions and reminders about upcoming events, then simply sign up here: [www.ashford.gov.uk/contact-us/get-updates-from-the-council](http://www.ashford.gov.uk/contact-us/get-updates-from-the-council)

## Water pump inventor honoured

Inventor Henry Harrison, 1811-1866, who was born in Ashford and lived at 48 High Street, has been honoured with a virtual plaque.

Harrison joins the list of famous names from our borough to be included in our heritage plaque scheme. He was credited with inventing the water pump and having the patent signed in the presence of Queen Victoria on 4 March 1841.

Visit our virtual plaque web page at [www.ashford.gov.uk/heritage-plaque-scheme](http://www.ashford.gov.uk/heritage-plaque-scheme) to find out more about Henry Harrison.



Images courtesy of Michael Hill.

## Stop Press: Bockhanger Community facility

Residents of Bockhanger will have a chance to discuss future plans for a new community facility when a virtual consultation event is held on 29 September. This is a revised version of the consultation event that was due to be held just before the first lockdown in March 2020. It will pick up from where things were left and discuss next steps. For details visit [www.ashford.gov.uk/consultations](http://www.ashford.gov.uk/consultations)

## Book sports sessions online

You can now book council-owned football, netball or tennis courts online. Visit [www.ashford.gov.uk/things-to-do/book-a-sports-facility](http://www.ashford.gov.uk/things-to-do/book-a-sports-facility) for more details.



## Competition winner

The winner of our competition to win a group tour of Biddenden vineyard and a case of wine is Fiona Reene from Kingsnorth. Thanks to everyone who took part – see pages 21 and 22 for our latest fantastic competitions.



**BOUNTY PEST CONTROL**  
 Providing pest control services to domestic and commercial markets since 1997.

Pest management agreements and individual treatments for Rats, Mice, Moles, Wasps, Fleas, Ants etc.

Bird proofing and control.

Responsible and reliable pest control from a local company

Fully insured, Authority approved.

01233 640191  
[www.bountypestcontrol.co.uk](http://www.bountypestcontrol.co.uk)

# Back with a bang

As restrictions lifted back in July, our high street came to life again. Behind the scenes throughout lockdown (all three of them!), Loveashford had been working hard to understand what life might be like for residents wanting a physical place to shop and socialise again once it was safe enough.

Did you notice the explosion of colour on the high street this summer? Highlights included our fabulous Banner exhibition created by local people, the Fabric of Ashford event which brightened up the bandstand, the arrival of the covid Recovery Poem to get you thinking, and the sweet sounds of the Elwick Place chill lounge.

## And that's not all

You might have noticed a new look for Loveashford online too. Back with a brighter, bolder new image you can find out all about what's coming to your town centre first here:

[www.loveashford.com](http://www.loveashford.com)

 @loveashford

 @loveashford



Photos courtesy of Emily Heritage. Heritage and Holland Photography.



# Popular centre in Singleton grows...

The newly expanded Singleton Environment Centre offers something for everyone. The clever, multi-purpose design provides a flexible space for everything from a family party to a creative workshop, business meeting or an after school activity.

The original centre (top right image) opened in 2012 and is home to the popular Footprints Café. Just under ten years later, the expansion allows a broader range of activities to be provided such as Ashford Green Gym, Repair Café, health walks around Ashford Community Woodland and children's workshops.

The extension was funded with developer contributions set aside to provide community facilities for the residents of Brisley Farm. The project has been managed by Great Chart with Singleton Parish Council and the operator Singleton Spaces.

### Childs' play

The centre offers tailor made school visits from nurseries all the way to secondary schools. The grounds are the perfect space for schools to educate and inspire their pupils in a safe environment away from the classroom.

*Mini Professors* is a science-based programme for children aged 2 years to 10 years. Using real objects, stories and videos each session has a different theme for the children to explore through an introduction, two experiments and a summary.

*ECOkids* is a term-time group for pre-schoolers and their grown-ups. The nature-themed sessions encourage an early connection to our wonderful, natural environment through exploring outdoors, getting creative using natural and recycled materials, and learning about plant care, animals and the environment.



Far left: ECOkids using their own natural watercolour paints. Left, above and right: Mini Professors creating bug hotels and turning leaves into mini-beasts.



For more information visit:  
[www.singletonenvironmentcentre.org.uk](http://www.singletonenvironmentcentre.org.uk)  
 ECOkids f: [Facebook.com/ECOkidsSEC](https://www.facebook.com/ECOkidsSEC)  
 e: [jenny@ecoventures.uk](mailto:jenny@ecoventures.uk)

Mini Professors e:  
[ashford-maidstone@miniprofessors.co.uk](mailto:ashford-maidstone@miniprofessors.co.uk)



# Half term Fun with Ashten!

Get ready to 'carve' out some fun and give 'em pumpkin' to talk about this October Half Term  
 25th - 28th October

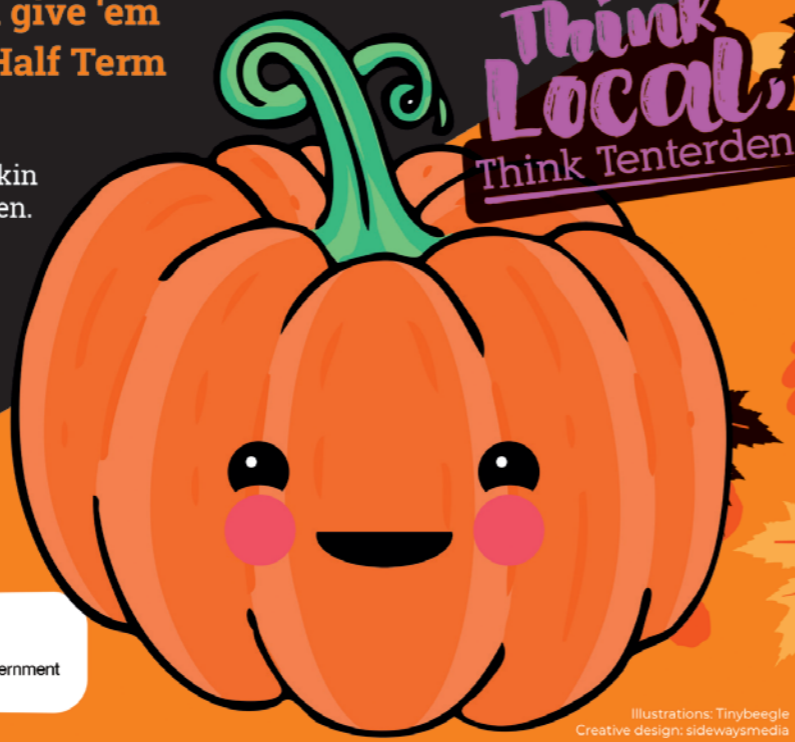
Book your FREE time slot and Join Ashten the Pumpkin on his craft-filled workshops in Ashford and Tenterden.

Get crafty and there may even be a prize up for grabs for the best pumpkin creations!

\*Book your time online from 1st September

[www.loveashford.com](http://www.loveashford.com)  
[www.visitashfordandtenterden.co.uk](http://www.visitashfordandtenterden.co.uk)

 @loveashford / @visitashfordandtenterden



Love Local,  
 Love Ashford

Think Local,  
 Think Tenterden

# EXPERIENCE Kent

Already crossed the threshold of each of Kent's castles? Ticked off a visit to all of our award-winning beaches? If you're looking for a new way to discover our wonderful county, we have great news...

Visit Kent and the Kent Downs AONB are working with a host of exciting businesses, organisations, landowners, and community groups, developing new, unique, and sustainable ways to get hands on and see the Garden of England from a whole new angle.

Interreg EXPERIENCE is a project that provides support in Kent to help develop the experiential off-season economy. Running until August 2023, EXPERIENCE is worth €23m across 10 partners in France and England. Visit Kent and the Kent Downs AONB are core partners.

EXPERIENCE capitalises on the trend for personalised and local tourism experiences. The concept is about putting our spectacular county on the map as the place to head to year-round.

Visit Kent, with local council partners including Ashford Borough Council, is working with traditional tourism and non-traditional organisations as part of an innovative Product Development Programme. By delivering 1-2-1 business mentoring, product development, and marketing, along with new photography and video, it enables them to deliver lasting change and create a legacy of experiential tourism. More than a dozen Ashford and Tenterden businesses have been accepted onto the programme including:

## Feeling crafty?

From pottery and jewellery classes, to sculpting willow, Cowshed Workshop offer the chance to learn a new skill and meet local artists and makers. And with a workshop set on a rural farm in Tenterden, you'll have the chance to switch off and indulge your creative side.

[www.cowshedworkshop.co.uk](http://www.cowshedworkshop.co.uk)

## Become a Rebel Farmer

Go on an inspiring journey, sample incredible organic local produce and learn how to grow your own, all-year-round. You'll discover how the Rebel Farmers ditched their city lives to start a farm from scratch in Kent, discovering the array of produce that can be grown while encouraging biodiversity, and leave with the skills to get green-fingered wherever you live. [www.rebelfarmer.co.uk](http://www.rebelfarmer.co.uk)

## Explore nature with expert guide

Spend a day with expert tour guide Hannah who will take you along part of the North Downs Way National Trail sharing some of Ashford's hidden secrets and pointing out nature's wonders. Every walk is different and will be tailored to the changing seasons. You'll get to learn all about our beautiful countryside plus enjoy a delicious locally sourced lunch. [www.walkkent.co.uk/kent-outdoor-explorers](http://www.walkkent.co.uk/kent-outdoor-explorers)



Become a Rebel Farmer

## More information

[www.visitkent.co.uk](http://www.visitkent.co.uk)

[www.kentdowns.org.uk/kent-experience-project](http://www.kentdowns.org.uk/kent-experience-project)

## Kent Downs AONB Business Support applications now open

**Have you got a great new outdoor experience idea?** The Kent Downs Countryside Experience Development Programme is aimed at businesses or individuals that are interested in nature and outdoor activities and are based in the Kent Downs or near the North Downs Way. New and existing businesses are offered free training, 1-2-1 mentoring and marketing promotion plus a co-funded equipment grant scheme worth up to £3,000. [www.kentdowns.org.uk/our-projects/experiencedevelopmentprogramme](http://www.kentdowns.org.uk/our-projects/experiencedevelopmentprogramme)

Kent Outdoor Explorers

# Taking centre stage Jasmin Vardimon creative hub steps forward...



A major new arts and creative hub for the county is on track to open in Ashford next spring. The state-of-the-art facility will provide a long-term base for internationally renowned dance company Jasmin Vardimon to expand their activities locally, nationally and on the global stage.

The new building (right) will include space for the creation of the company's touring productions, rehearsals, training, educational and community classes, plus incubator space for small creative businesses.

## Creative space

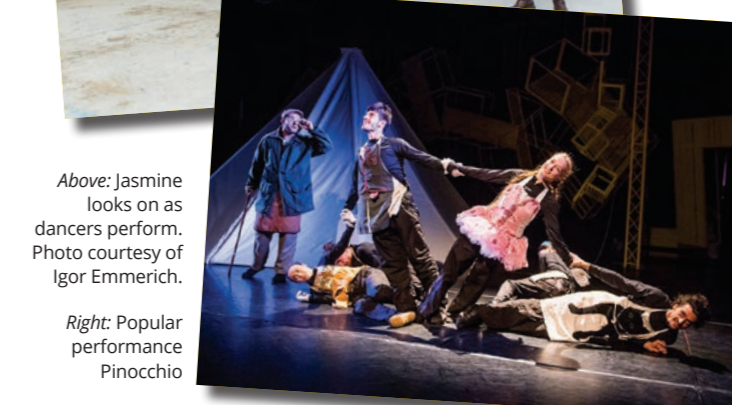
At 13,530sq ft, this is one of Kent's largest cultural infrastructure projects and the building will form the centre of a major new arts hub in Ashford, alongside a number of light industrial units, which could also attract creative businesses to the area.

Located along Javelin Way on the Henwood Industrial Estate the primary creation space will also be available to hire by external creative companies, offering studio space with a fully sprung dance floor, lighting, sound and AV rig.

A new café and meeting rooms will also be available providing flexible spaces for the local community to meet and use.

## Strong relationships

The company continues to build strong relationships with about 60 schools and colleges in Kent and to connect with creative and community organisations across the region alongside collaboration and investment from businesses.



Above: Jasmine looks on as dancers perform. Photo courtesy of Igor Emmerich.

Right: Popular performance Pinocchio

The project is funded and supported by: Kent County Council, Arts Council England, Ashford Borough Council and the South East Local Enterprise Partnership. For more information visit: [www.jasminvardimon.com](http://www.jasminvardimon.com)

# Carbon Neutral Action Plan – don't delay, have your say!



There is just over **TWO WEEKS** left to have your say on our draft Carbon Neutral Action Plan and you have a vital role to play in our planning.


**W**ith the consultation closing at the beginning of October, now is the time to act and tell us what you think, if you haven't already.

Residents have a vital role to play in shaping the action plan so we want to hear your thoughts and views on the priorities, objectives and actions.

The plan supports our aim to achieve carbon neutrality within the council's own estate and operations by 2030. It emphasises the need for the whole community's involvement in achieving Ashford-wide carbon neutrality before 2050.

Eight priority areas feature in the plan, focusing not just on how the council can improve sustainability and achieve net zero carbon in our own operations, but also how we can encourage and enable all of Ashford to join us on this journey.

Alongside the consultation we have also started introducing the Ashford Climate Action logo. When displayed, this stamp will instantly show that a project, business or person is involved in achieving carbon neutrality in our borough.



Look out for more information on social media soon regarding the Ashford Climate Action stamp, what it means and how to qualify for one.

## Responses so far

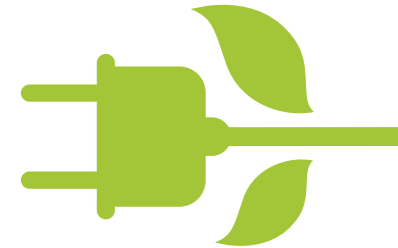
From the responses so far we know people are already taking action to reduce regular vehicle use where possible and replace it by walking and cycling more. Suggestions for action include: more accessible and cleaner public transport, more bike lanes, safer streets to encourage walking and the need for a greater number of EV charging points. We will be looking at all the ideas for action when we finalise this plan, and are already putting some things in place – see the article on EV charging for more on this point in particular.



You can take part in the consultation here: [www.ashford.gov.uk/environmental-concerns/carbon-neutral-agenda/carbon-neutral-action-plan-consultation/](http://www.ashford.gov.uk/environmental-concerns/carbon-neutral-agenda/carbon-neutral-action-plan-consultation/)



# The future of driving charges ahead



Ashford Borough Council has begun a programme to replace and install electric vehicle (EV) chargers across the borough over the next year. The project aims to encourage drivers to go electric, tackle transport pollution and meet rising demand.

**R**esidents can expect more places to charge their electric vehicles as part of the borough's plans to accelerate a switch to cleaner modes of transport. One of our key aims is to reduce air pollution and further lower carbon emissions by giving more people the option of driving and owning electric vehicles. The council hopes that providing an increased number of points will address consumer anxiety around the availability of charging – one of the key reasons behind a reluctance to go electric.

We are applying for a grant from the Office for Low Emission Vehicles to support our installation of new EV chargers. The first phase of the project will see EV chargers in our main car parks and will be available for motorists. It is planned that the points will be supplied through partnerships with external contractors.

Councillor Peter Feacey, portfolio holder for parking, said: "I'm thrilled that Ashford Borough Council is delivering this Government-funded project, which will help to tackle a real issue for many Ashford residents who would like to drive electric. As more people could be buying electric cars than petrol or diesel, our project will help us prepare for this future."

One of the key elements of this project is a learning experience – identifying the best charging solutions for different situations and locations and using our assets in better, smarter ways to help minimise costs. This way we can all look ahead to a brighter, greener future for driving.



# Remembering our babies

Ashford's Memorial Gardens are the perfect place to pause and reflect as we shine the spotlight on two poignant installations...



Did you know that the gardens is home to the Ashford Baby Memorial Garden? Created in 2013 by local volunteers, the Ashford Baby Memorial Garden is fully accessible and open to everyone. It's the perfect place for families to come and remember their special babies.

Losing a baby is devastating and something families just never expect. The Garden is there to remember but also helps to raise awareness of baby loss, with East Kent Baby Memorial Gardens Charity volunteers on hand to support anyone losing a baby, no matter when or at what stage.

Name tiles are made available for a one-off cost of £40, making it an affordable option. In total, there are over 300 baby names recorded in the Garden so far, serving as a memory to last forever.

## Eternal flame

The Wave of Light is a special event each year to remember all the babies who have died and consists of readings, music, and a period of remembrance.

Candles are lit for one hour and coincide with Baby Loss Awareness Week, which takes place from 9-15 October. This year, Wave of Light will be hosted at St Mary's Church in Ashford town centre.

## How can I give my support?

The charity is run by bereaved families for bereaved families and they rely on volunteers to keep the Baby Memorial Gardens operational. All income is generated from fundraising and donations so if you would like to get in touch, contact Chris Tydell on 01233 643 976, visit [www.eastkentbabymemorialgardens.org.uk](http://www.eastkentbabymemorialgardens.org.uk) or connect on Facebook via [www.facebook.com/ekbmgg](https://www.facebook.com/ekbmgg)

# The Few thousand plants behind Spitfire memorial



People have been admiring a large floral Spitfire which has been installed at the Ashford Memorial Gardens to commemorate the anniversary of the Battle of Britain.

The elevated eye-catching display comprises 3,400 plants, weighs one ton and features a 3.5m long fuselage with a wingspan of 4m.

The memorial has been crafted by Aspire Landscape Management, who look after council-owned green spaces. This includes parks, floral beds, open green areas, cemeteries, grounds around some housing sites, hedges and sports pitches.

Our picture montage shows how the Spitfire memorial was brought to life, while three accompanying panels explain and educate visitors on how Kent was closely involved with the Battle of Britain.

Visit our website to view a digital version of these panels at [www.ashford.gov.uk/battle-of-britain](http://www.ashford.gov.uk/battle-of-britain)



## Plant a tree for the Jubilee

The Queen's Green Canopy (QGC) is a unique tree planting initiative created to mark Her Majesty's Platinum Jubilee in 2022 which invites people from across the UK to Plant a Tree for the Jubilee.

As well as inviting the planting of new trees, The Queen's Green Canopy will dedicate a network of 70 Ancient Woodlands across the country and identify 70 Ancient Trees to celebrate Her Majesty's 70 years of dedicated service.

To thank the Queen for her service and celebrate Her Majesty's Platinum Jubilee, we are aiming to plant one tree representing each resident who will be living in the borough in 2022. This will be nearly 135,500 trees planted over the next three years!



We are calling on everyone in the borough, from residents to businesses, land owners, developers, schools, villages and volunteer groups, to help with this ambitious initiative.

This is a great opportunity to not only grow trees but to come together as a community and make a contribution to reducing our impact on climate change, safeguarding and enhancing the environment creating a living legacy in our borough for generations to come.

Trees will be planted from October 2021 through the end of the Jubilee year in 2022 and beyond.

Whether you are a volunteer group, a business who might like to sponsor a project, a land owner who wishes to offer land for the planting of trees or simply a resident that would like to play an active role in enhancing and nurturing our borough, we would like to hear from you.



Visit [www.ashford.gov.uk/green-canopy](http://www.ashford.gov.uk/green-canopy) and become part of the 'Ashford's Tree-army community'.

## Alternative recycling

We collect many types of household materials for recycling but there are some items the council are unable to take, due to certain restrictions in place at the Waste and Recycling Centre..

We know the borough is full of keen recyclers who want to go the extra mile for the planet so we've put together a list of places you can recycle items that aren't taken in the household recycling collections.



### TerraCycle

From pill packets to pens, biscuit packets to coffee pods, TerraCycle is a recycling company that recycles typically hard-to-recycle waste that is not collected by councils.

They offer a range of free national recycling programmes which are sponsored by brands, manufacturers and retailers to enable you to recycle hard-to-recycle waste.

Visit: [www.terracycle.com/en-GB](http://www.terracycle.com/en-GB) to see what free recycling programmes are offered in your area.



Did you know that you can recycle your unwanted make up products?

With an estimated 146 million make-up products being produced every year, Maybelline is leading the way by providing free recycling boxes for all your finished foundations, unloved liners and past-it palettes.

Find your local drop off point at [www.maybelline.co.uk/recycling](http://www.maybelline.co.uk/recycling)



### Plastic film and carrier bags

Plastic film and carrier bags can't be recycled at home, but some can be recycled at supermarket carrier bag collection points.

Once collected this plastic packaging is sent for recycling and turned into new packaging for food, household and beauty products.

To find out what forms of soft plastics are accepted and where it is collected locally, search [www.recyclenow.com/what-to-do-with/plastic-film](http://www.recyclenow.com/what-to-do-with/plastic-film)



### Coffee pods and crisp packets

Adam Hunter, founder of Recycle 4 Good, set up a public access drop-off location at his home in Ashford in 2017, enabling unrecyclable waste such as crisp packets and coffee capsules to be collected.

Along with TerraCycle's charitable donation scheme, Adam and his team of volunteers have raised over £60,000 for the Air Ambulance Kent Surrey Sussex, and collected more than 4.2 million coffee pods and three million packets of crisps.

Adam is always looking for more support so anyone interested in helping can find out where to take their waste on their Facebook group [www.facebook.com/charityrecycling](http://www.facebook.com/charityrecycling)



Visit [www.ashford.gov.uk/how-do-i-dispose-of/](http://www.ashford.gov.uk/how-do-i-dispose-of/)





1

# Thank you photographers of Ashford

In our last edition we called on you to capture biodiversity in our borough and we were amazed by the response. We were inundated with entries and had to change our top three to a top six due to the level of high quality images we received. You can see the winning images below and don't forget to keep an eye out to see them on our brand new Biffa fleet this autumn.



2



3



4



5



6

### Winning Photographers

1. Mr T Harper – Deers at Mersham Le Hatch
2. Margaret Warner – Swans at Conningbrook
3. Ray Hopper of James Allchin gardens, Little Burton – Butterfly in garden – Kennington
4. Margaret Bracewell – Squirrel with pumpkin
5. @gareth33c – Bee on flower
6. 'Bramblewood House, UK Wildlife' – Fox cubs in garden – Willesborough



Illustration only.



## A suburban oasis

Hidden away in the heart of suburban north Ashford, the Bybrook Nature Reserve is a beautiful natural oasis of calm and a haven for wildlife. Once a thriving nature reserve, it has become overgrown over time, where it has been closed to the public.

The Friends of Bybrook Nature Reserve are a small, dedicated group of volunteers who are determined to return this pocket of land in Kennington to its former glory so that it can be accessed and enjoyed by local residents.

With the generosity of public funding, the Friends have been able to restore a small part of the reserve and open it to the public on certain days.

There is still much work to do to restore the site and make it accessible for all, and the Friends of Bybrook Nature Reserve are always eager for willing volunteers to join them in their worthy cause.

If you are interested in visiting or finding out more, find us on Facebook or

email [friendsofbybrooknaturereserve@gmail.com](mailto:friendsofbybrooknaturereserve@gmail.com) or visit [www.bybrooknaturereserve.wordpress.com](http://www.bybrooknaturereserve.wordpress.com)



# Tenterden Folk Festival is back with a song and a dance!



Photo courtesy of Lewis J Brockway

Tenterden Folk Festival returns from Thursday 30 September to Sunday 3 October. Many of the guests originally booked for the postponed 2020 event will be there, including a rare appearance of Chris and Steve Wilson along with new additions such as multi-instrumentalist Steve Turner and Dora Darling.

A selection of stalls will offer hand-made jewellery, woodturning, garden plants, leather work, musical instruments and other artisan crafts. Plans also include a mix of concerts, barn dance, workshops, meet the guests, sing-a-rounds, music sessions, dance displays and more.

For the latest information and to purchase tickets visit their website at [www.tenterdenfolkfestival.org.uk](http://www.tenterdenfolkfestival.org.uk)

## Get entertained at Revelation Ashford

Take your seats at Revelation Ashford this Autumn and let them entertain you. Here's just a taster but you can find the full schedule on the Revelation website: [www.revelationashford.co.uk](http://www.revelationashford.co.uk)

### Coda: A Tribute to Led Zeppelin

Europe's most exciting and authentic tribute to Led Zeppelin, featuring such classics as Whole Lotta Love, Ramble On, and showstoppers such as Stairway to Heaven, Rock and Roll and many more!  
 18 September, 7.30pm, Tickets: Early Bird: £18, Door: £20 (under 16s must be accompanied by an adult).



Revelation Ashford: Coda



### George Michael Story

The George Michael Story starts with George in the Wham! days and then into the Grammy Award winning 'Faith' album, through to George's more mature hits. A full live band with video screens supporting the show including video footage of George and interviews with the man himself.  
 16 October, 7.30pm, Tickets: Early Bird: £25, Early Bird U16: £21, Door: £30, Door U16: £25.

Photo courtesy of Philip Hinton

### Rich Hall's Hoedown Deluxe

Rich Hall's comedy/music locomotive keeps on rollin'. Ever-evolving, ever-changing, Rich's combination of keen acerbic stand-up combined with spit and sawdust alt-country lyricism is a "win-win" (GUARDIAN), as sold out crowds across the UK have attested.  
 23 October, 8.00pm, Tickets: £17, 14+ Only. Under 16s must be accompanied by an adult.



Revelation Ashford: Rich Hall

### Gordon Hendricks as Elvis

Gordon brings his fantastic sell out show, recreating those magical vocals, featuring all of those favourite Elvis songs and many more – it's as if Elvis himself is on stage.  
 6 November, 7.30pm, Tickets: Adult: £25, Under 16: £20, Concession: £20



Revelation Ashford: Gordon Hendricks as Elvis!

All these events are held at Revelation Ashford, St Mary's Church, The Churchyard TN23 1QG.

## VOLUNTEERS MAKE THE RAILWAY WORK



### WE'RE RECRUITING NOW!

Join the team creating special memories for thousands of visitors every year.

We have vacancies across the railway with a vast variety of roles to suit everyone.

Experience is not required as training will be provided.

Learn more about how you can help keep us steaming at: [kesr.org.uk/volunteering/](http://kesr.org.uk/volunteering/) or scan the QR code



KENT & EAST SUSSEX RAILWAY



### Enjoy the colours of Autumn at Godinton House

#### NGS Open Day at Godinton House & Gardens

Once again Godinton House & Gardens will open to support the work of the National Gardens Scheme.  
 26 September, 1.00pm to 6.00pm, Entry £7.

#### Half Term Family Time at Godinton House

Familiar faces will run a range of fun, hands-on workshops for the family. The morning sessions will replace their historic Autumn Week, though you will still be able to enjoy a trail around the glorious autumn garden in the afternoons. Check the Godinton House website for listings of the individual workshops.  
 Every morning 26-29 October, 10am to noon, Booking essential, Admission: Workshops £15 (for one adult and one child), Gardens only Adults £7, Children (under 16) FREE.

Both these events are being held at Godinton House & Gardens, Godinton Lane, Ashford TN23 3BP.

For more information and to book [www.godintonhouse.co.uk](http://www.godintonhouse.co.uk)



For even more events around the borough visit [www.experienceashfordandtenterden.co.uk](http://www.experienceashfordandtenterden.co.uk)



# Busy Autumn in Victoria Park

Autumn and winter in Victoria Park will see more major works beginning as the project moves forward. We will also be using this season to plant the next generation of the park's trees.

Our Youth Council successfully led other young people in a social media 'Kids Takeover' in July to present things their way! To join the Youth Council get in touch with [nicola.priest@ashford.gov.uk](mailto:nicola.priest@ashford.gov.uk).

Our conservation volunteers will spend autumn continuing their work throughout the park. If you are interested in joining them, or looking at any of our other volunteering opportunities visit our website for details.

Summer also saw our partners at KSCP holding successful events for the public with their Bugblitz, moth events and river dipping activities. This autumn will see them running a themed scarecrow trail in the park so if you want to join in or come and see them, keep your eye on our social media or visit [www.kentishstour.org.uk](http://www.kentishstour.org.uk) for more information.

Friends of Victoria Park have been able to restart their monthly litter picks, and the group are looking for new members to help provide a voice for the community. Find out how you can join them by visiting [www.victoriaparkashford.uk](http://www.victoriaparkashford.uk).

The project team will also be running October half term activities, including spooky Halloween workshops, with details being made available across our social media channels.

For information on these activities visit the website and keep an eye on our social media [www.ashford.gov.uk/victoria-park](http://www.ashford.gov.uk/victoria-park) [www.victoriaparkashford.co.uk](http://www.victoriaparkashford.co.uk)

VictoriaParkABC VictoriaParkAshford VictoriaParkABC VictoriaParkAshford Victoria Park Ashford

## On your bike

Time to explore our beautiful borough on two wheels...

Ashford already has an excellent network of well-used cycling routes across the borough, which incorporates parts of the national cycling network as it passes through the area.

Our walking and cycling strategy champions the benefits of cycling, especially for health and wellbeing as well as supporting our aims for carbon neutrality. The strategy highlights policies, projects and events aimed at increasing the number of journeys made by bike.



### Repair workshops and guided tours

A series of Discovery Cycle Rides and Cycle Fix sessions were held throughout July and August. They provided an opportunity to share knowledge of local cycle routes and lots of helpful advice about bicycle care and maintenance.

### Funding available for cycling schemes

Local not-for-profit community and voluntary groups can apply for grants to fund community projects, which encourage and enable people to take up walking and cycling.

They could make it safer for people to walk and cycle, improve cycle security or contribute towards a low carbon footprint and promote environmentally responsible and sustainable behaviour.

### More in store

Future projects are likely to include working with local businesses to produce Active Travel plans, more secure bike storage points and improvements to walking and cycling routes at Hothfield, the Warren and Victoria Park.

The Cycling and Walking Strategy 2019-2029 has six main aims:

-  To provide and improve the cycling and walking network
-  To increase cycle parking around the borough
-  Maintaining the existing cycling and walking network
-  Focusing on safer cycling
-  Promoting cycling and walking in the borough
-  Increasing opportunities for cycling and walking tourism



For more information visit: [www.ashford.gov.uk/cycling-and-walking](http://www.ashford.gov.uk/cycling-and-walking)



## WIN a Premier Plus annual membership

**WORTH £480!**

Following a £7.5million refurbishment, and reopened in June 2021, the Stour Centre offers some of the best leisure facilities in the south east. This is your chance to win a Premier Plus annual membership worth £480, which includes unlimited swimming, racquet sports, group exercise classes, and gym sessions, including a personalised programme using the Technogym Biocircuit.

To find out more about your new-look Stour Centre visit [www.thestourcentre.co.uk](http://www.thestourcentre.co.uk). You can also contact us by email at [thestourcentre@freedom-leisure.co.uk](mailto:thestourcentre@freedom-leisure.co.uk) or call on 01233 663503.



 **freedomleisure**  
where you matter

For details of how to enter this fantastic competition, and for our terms and conditions, please see information at the bottom of p22 overleaf...

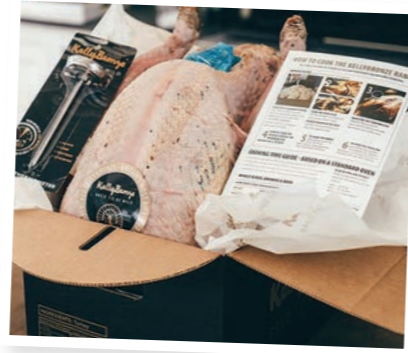


# WIN a Christmas turkey from Kent Turkeys

Kent Turkeys produce free range KellyBronze turkeys on the family farm, Woolpack Corner Farm, just outside Biddenden. By allowing the birds to free range across 16 acres of pasture, they are able to graze and pick at the bugs and berries, meaning they are naturally happy and healthy.

The birds are hatched in their natural season and grow slowly to full maturity which, coupled with being free range, means they develop a natural layer of fat, as well as a more mature carcass and bone – all of which are essential for award-winning flavour and a delicious natural gravy stock.

Kent Turkeys is giving away one 6kg turkey and a delicious turkey and cranberry pie, to be collected from one of their collection points for Christmas. The winner must advise Kent Turkeys of their chosen collection point, a full list of which can be found on their website.



Kent Turkey's KellyBronze turkeys are available to order online from September at [www.kentturkeys.co.uk](http://www.kentturkeys.co.uk) or by calling 01580 291792 for collection from the farm or selected pick up points around Kent.



# WIN

## fabulous dining experiences at Elwick Place

We have not one but **TWO** amazing dining experiences to give away at two Ashford restaurants that have been taking the town by storm since they opened in Elwick Place this summer.

A voucher for two people to enjoy the tasting menu on a Friday evening at The Gastronomist Club can be yours. The dinner party-styled restaurant has been delighting customers with its open-flamed two metre wide parrilla (grill) and menus inspired by the freshest and finest available ingredients from the surrounding Kent countryside.

A meal for two people up to the total value of £50 is also up for grabs at the family-friendly Italian restaurant Unità 4, the new home of hand rolled pasta and authentic pizzas in Ashford. Enjoy al fresco dining, cocktails, coffee and cakes and more.

Both prizes are available to redeem by 31 December 2021.

For more information visit [www.unita4.com](http://www.unita4.com) and [www.thegastronomistclub.com](http://www.thegastronomistclub.com)



The GASTRONOMIST



UNITÀ 4

To enter your name in one of our three prize draws either:

\* Email the editorial team at [competition@ashford.gov.uk](mailto:competition@ashford.gov.uk) – put **Stour Centre** or **Kent Turkeys** or **Elwick Place dining competition** in the subject heading and include your full name, postal address and email. Please include a contact phone number.

\* Send a postcard or sealed envelope with your name, address, email and contact phone number to: *Ashford For You* magazine, Communications, Ashford Borough Council, Civic Centre, Tannery Lane, Ashford TN23 1PL. Write either **Stour Centre** or **Kent Turkeys** or **Elwick Place dining** competition entry on the card. We will contact the winners to request consent to provide your contact details to Stour Centre or Kent Turkeys or Elwick Place to enable you to claim your prize.

**Terms & conditions:** 1. The competition is open to UK residents aged 18 years or older except employees of the Promoter, their families, agents or any third party associated with the competition. 2. The closing date of the competition is **5pm on Monday 11 October 2021**. Entries received after this time will not be included. The prizes are non-transferable and non-refundable. There are no cash alternatives. 3. By accepting the prize you also agree to be bound by standard terms and conditions specified by the prize providers. Only one entry per person. Editor's decision is final. Ashford Borough Council is the data controller for the personal information you provide us and this will be used to circulate our magazine and keep you up-to-date on recent news and events. Collecting and processing of your personal data is being conducted relying upon the legal basis of consent. You have the right to remove your consent at any time by sending 'unsubscribe' to [media@ashford.gov.uk](mailto:media@ashford.gov.uk). The option to unsubscribe will be offered each time we contact you. We will not share your information with any third parties unless we are required or permitted to do so by law. Your information will be held for as long as we produce a residents' magazine and you stay subscribed. For more information about your data protection rights see our data protection pages at [www.ashford.gov.uk](http://www.ashford.gov.uk) or contact the Data Protection Officer, Ashford Borough Council, Civic Centre, Tannery Lane, Ashford TN23 1PL.



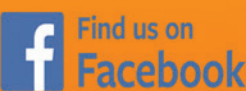
# da BASE

# MUSIC CLUB

Da Base Music Club is a new, fun and exciting project which provides young people the opportunity to maximise their creative potential through music technology.

For more info visit [www.dabasemusic.co.uk](http://www.dabasemusic.co.uk)

Da Base Music Centre  
Bank St, Ashford, Kent, TN23 1BA  
(Located at the back of ACF church opposite Subway)



J

W

A

I



E



B



N

H



X



F



From **A-Z** in Ashford

A

R

V



T



next

NEW LOOK

H&M

PANDORA

the Entertainer

COSTA

The Works

W Waterstone's

countysquashoppingcentre.com

