

ASHFORD FOR YOU

Issue 20 | Spring 2023

YOUR BOROUGH, YOUR MAGAZINE



BEST FOOT FORWARD

Creative Enterprise Quarter in the spotlight

RESIDENTS' SURVEY RESULTS

CRUCIAL ELECTION CHANGES

WIN

- Tickets to Godinton House & Gardens
- KESR steam railway family passes

IT'S NEVER TOO LATE TO LEARN

No matter your age, we believe high quality learning should be available to everyone.

Whether you are looking to change your career, get new skills to achieve a promotion, or simply start a new hobby, Ashford College has a course for you.

Anyone aged 19 and over can enjoy the wide range of short-term and part-time courses on offer at Ashford College, taught in adult-only classes that offer the opportunity to boost your social circle and become more proficient in your area of interest.

Designed with adults in mind, our programmes are perfectly tailored to those with time constraints due to work and family. By coming into College for just one evening per week, within a few months you will walk away with a recognised qualification which you can use to find a new job or go up a rung in your company.

Part-time courses are available for people of all abilities, whether you're a complete beginner in a subject or preparing to enter

university. If you have a couple of gaps in your CV, we also offer evening classes to secure GCSEs in English and Maths which are vital in securing employment.

As well as part-time courses, Ashford College offers Higher National Certificates in Construction as well as Engineering. These Higher Education qualifications, also known as HNCs, act in place of your first year at university, and can be topped up to achieve a full degree.

So if you want to resume your education journey, Ashford College has an option for you. Search ashfordcollege.ac.uk today to see your options.



Welcome



Welcome to the spring issue of *Ashford For You*. With lighter evenings and the promise of warmer weather ahead I always feel that this is a time to look forward with renewed hope and confidence for the year ahead. This edition is certainly packed with news and features which paint a positive picture of good things happening across our beautiful borough.

As our front cover shows, there is great excitement at the opening of the Jasmin Vardimon Company's purpose-built centre; this international dance academy has gone from strength to strength since it made its home in Ashford. Eight years in the planning and part funded by a £3m National Lottery grant with other financing from Kent County Council and Ashford Borough Council, JVHome also includes incubator and start-up spaces for emerging local creative companies and individuals.

One of our favourite green spaces – Victoria Park and Watercross Fields – continues its rebirth as the multi-million pound investment in new features and facilities take shape. 2023 will be a big year for Victoria Park as many of the exciting improvements come to fruition and I can't wait to see the completion of this amazing project.

We continue to look at ways of helping residents cope with the ongoing cost of living crisis and we have a two page report providing energy saving advice, tips on making ends meet and signposting on where you can turn to for more help, guidance on safeguarding your wellbeing.

Finally there is important news about changes to the way you can vote at polling stations in May's local elections – for the first time people will need to show valid photo ID before they can cast their vote.

Tracey Kerly
Chief executive, Ashford Borough Council



Contents

News	4-5
Best Bar None, Ashford Community Lottery and more	
Local elections	6
Photo ID required in polling stations – read all about it	
Residents' survey	7
You have your say...	
Cost of Living in focus	8-9
Eat well spend less...	
Spotlight on new planning portal	10-11
Making the planning system work for you	
Jasmin Vardimon opens	12-13
Ashford welcomes new international creative hub	
Environment in focus	14-16
Climate action, recycling, avoiding contamination and more	
Victoria Park	17
Spring events and schools initiative	
What's On	18
New museum, tourism video and UNFRAMED Ashford	
Facing up to new laws	19
Changes for the beauty and cosmetic treatment sector	
Our links with the Armed Forces	20
Roundup of military news in the borough	
Home truths	21
Tenancy fraud and help with condensation in the home	
Competitions	22
Win tickets to Godinton House & Gardens and KESR steam railway family passes	

Editorial

Dean Spurrell, Jeff Sims, Samantha Stone, Alan Ng, Charlie-Jayne Ashby, Imogen Horwood

Design

Emma Spicer, Ben Jones, Deborah Caplan

Printed by

William Gibbons & Sons Ltd.

Advertising Sales

Call: 01233 330543 or
Email: media@ashford.gov.uk

Front cover image courtesy of
Jasmin Vardimon Company (c) Alistair Muir.

Get in touch!

To comment on this magazine, to tell us what you'd like to see more of and maybe to submit an article of your own:

Email: media@ashford.gov.uk (subject line NEWS) or
Write to: Ashford Borough Council, Civic Centre,
Tannery Lane, Ashford, Kent, TN23 1PL

nextdoor AshfordBoroughCouncil
 [ashfordboroughcouncil](https://www.youtube.com/ashfordboroughcouncil) @Ashfordbc [ashfordcouncil](https://twitter.com/ashfordcouncil)

Customer Services

Email: customer.care@ashford.gov.uk or call: 01233 331111
or write to us at the above address.
Find your borough councillor: www.ashford.gov.uk/councillors

Please note: For current information on the Civic Centre opening hours and face-to-face appointments please visit: www.ashford.gov.uk/contact-us/get-in-touch-another-way

Happy birthday Ashford Community Lottery!



Last year, the Ashford Community Lottery was launched as a fun and effective way for local not for profit groups to raise money to deliver their valued services in the community.

Since its launch, more than 70 local good causes have signed up, with more than £22,000 raised!

Players of the lottery can win weekly cash prizes up to the £25,000 jackpot. Tickets cost just £1 with 60% of each ticket going directly to the local good cause of your choice.

More than £4,000 has been given away in ticket prizes already, and hundreds of people have won extra tickets too!

To purchase your tickets, or if you are a good cause and wish to sign your group/organisation up (it is easy to do and FREE), then head to www.ashfordcommunitylottery.co.uk

Kent Young Carers (Imago Community) said: "It was really easy to set up our cause on the website. Being involved has two great bonuses to us, we are raising free funds and raising our profile so that people know we are here to support them. It doesn't cost us anything to be on the site and the handy customisable templates for social media, website and emails make it even quicker to raise the funds. The funds raised come straight into our charity account, what could be easier than that?"



Become a member of East Kent Hospitals today

Everyone's motivation for joining their local NHS Trust is different. You or a relative may have had hospital treatment or might simply be passionate about the NHS.

East Kent Hospitals is your local Foundation Trust and provides acute hospital care in east Kent.

Foundation Trusts have a wide membership of local people, patients and staff, aged 16 and over. Members vote to elect local Governors to represent them.

We want to listen and use your feedback to help us improve services. You can be involved as much or as little as you want, from just receiving news or asking your governor to represent your views, to helping us redesign services or even standing as a Governor yourself.

Find out who your governor is by visiting www.ekhft.nhs.uk/governors.

For more information visit www.ekhft.nhs.uk/members; email foundationtrust@nhs.net or phone us on 01233 616806.

There are lots of reasons to sign up:

- Have your say on local NHS services
- Get the latest news straight into your inbox
- Vote for your local governor or stand yourself
- It's free and you get high street discounts
- Get an invite to our events and annual meeting

Holocaust Memorial Day

On Friday 27 January we marked Holocaust Memorial Day (HMD) with a Service of Reflection at the Anne Frank Memorial Tree in Ashford's Memorial Gardens.

It was a poignant service, led by Mayor Cllr Jenny Webb, and included the laying of a posy and a moment of personal reflection. Afterwards attendees viewed the HMD Ordinary People exhibition in the Ashford Gateway.

New school

Opening this September, Chilmington Green School will deliver an outstanding education which fully prepares students for successful adult life. Our first cohort of Year 7 students will be trailblazers for the school and will play a key role in its development.

www.chilmingtongreenschool.org.uk



JOIN CHILMINGTON GREEN SCHOOL
Inspiring young people to succeed through a values-led education.

I Best Bar None



In a police-led initiative, Ashford Borough Council Licensing, Kent Police, and APAC (Pubwatch) ran the Best Bar None scheme in Ashford last year.

The scheme seeks to help customers identify premises which are well run in terms of venue management, staff training and care, customer safety and welfare, and customer service and community.

Six of the town's premises went through the assessment scheme and passed, with The Ashford Club (pictured) receiving the highest score and Cameo Nightclub being highly commended for public safety.

The following businesses applied for and gained Best Bar None accreditation:

- Cameo
- The Ashford Club
- J D Wetherspoon at County Hotel
- Ashford International Truckstop
- Boutilliers
- Valerie's Wine Bar Limited

To find out more about the scheme email licensing@ashford.gov.uk



Lifesaving initiative

Ashford Borough Council has bought and installed vital lifesaving equipment at ten independent living schemes in response to suggestions from tenants who attend Dahlia Forums, the regular meetings held with tenants of the Dahlia schemes.

Training in how to use the equipment has been arranged for those tenants who wish to receive it and the defibrillators have been installed on exterior walls at the ten schemes, so enabling local communities to access them too.

Our photo shows the first defibrillator installed at Danemore in Tenterden. From l-r is ABC Chief Executive Tracey Kerly, Susanne Lynch and David Marsh (Dahlia scheme residents who championed the initiative) and Tenterden mayor Cllr John Crawford.

Visit www.ashford.gov.uk/housing/housing-help/independent-living



Competition winners

More than 350 entries were received for our fabulous competitions in the last issue. The winner of the Gusbourne wine lunch for two is Graeme Rumley, while Carolyn Mell won the hire of four electric bikes for the day. Thanks to everyone who took part – see page 22 for our latest fantastic competitions.

GUSBOURNE



The King's Coronation

Saturday 6 May 2023 marks a historic day as King Charles III will be crowned at Westminster Abbey. Here in Ashford we will be celebrating the day with a community event in Victoria Park, as well as a Civic Service at St Mary's Church, Ashford on Sunday 7 May. You can visit our special Ashford Celebrates page for more details on these and other events in the wider borough.

Town and parish councils and villages across the borough are also being asked to share details of public Coronation events, so please contact heritage@ashford.gov.uk so that they too can be promoted.

We are also encouraging residents to take part in the national celebrations including The Coronation Big Lunch on Sunday 7 May, which brings communities together by celebrating their connections and The Big Help Out on Monday 8 May, which reflects on the legacy of His Majesty's service and showcases the impact of volunteering within communities.

For more information visit www.ashford.gov.uk/ashford-celebrates



Providing pest control services to domestic and commercial markets since 1997.

Pest management agreements and individual treatments for Rats, Mice, Moles, Wasps, Fleas, Ants etc.

Bird proofing and control.

Responsible and reliable pest control from a local company

Fully insured, Authority approved.

01233 640191

www.bountypestcontrol.co.uk



You will need photo ID at polling stations in May

For the first time, people across the country will need to show photo ID to vote in polling stations at this year's local elections. So residents in the borough of Ashford are being urged to make sure they are ready to vote in May by checking they have an accepted form of ID.

Introduced by the Government to help combat fraud, the change requires voters to show photo ID at polling stations before a ballot paper is issued. Accepted forms of ID are shown here. Voters will be able to use expired ID if they are still recognisable from the photo.

Anyone who does not have one of the accepted forms of ID can apply for free ID – called a Voter Authority Certificate – online at voter-authority-certificate.service.gov.uk or by completing a paper form. To apply for the Certificate, you need to provide a photo, full name, date of birth, the address at which you are registered to vote and your National Insurance number.

The full list of accepted ID is available on the Electoral Commission's website, along with details of how to apply for the free ID. Visit electoralcommission.org.uk/voterID

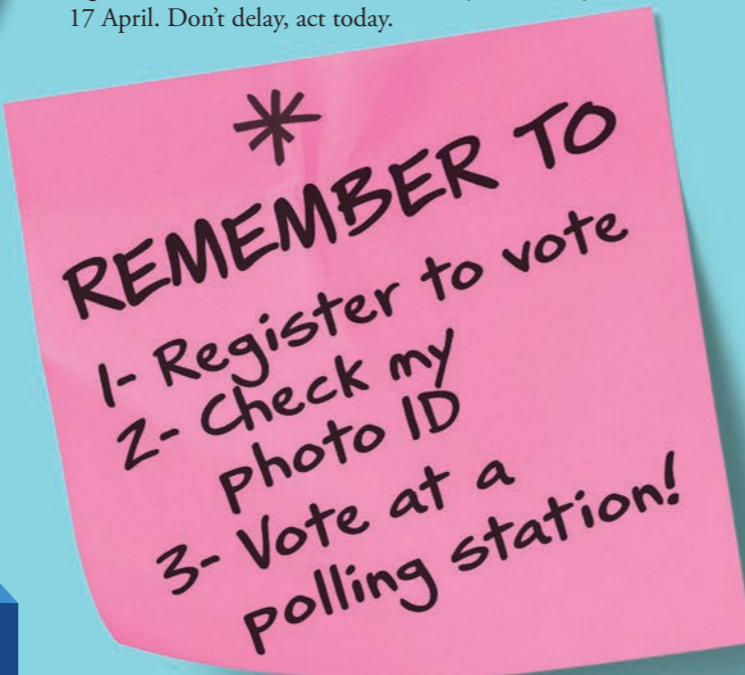
Tracey Kerly, Chief Executive at Ashford Borough Council and the Returning Officer for the borough, said: "With elections taking place in Ashford on 4 May, it is vital that those who want to vote make sure they have an accepted form of ID. It may seem early but checking now means you will be ready to vote in May."

"Residents who do not have one of the accepted forms of ID can apply for free ID either online or by completing a paper application form and sending it to Ashford's electoral services team. If you need any help with applying for the free ID or want to request an application form, contact our Helpline on 01233 330402."

Photo ID is not required for postal votes so why not consider registering for a postal vote today? From October, the photo ID requirement is extended to parliamentary general elections.

Have your say - register to vote today

To have your say in the May elections you must be registered to vote. It only takes five minutes to register online at www.gov.uk/register-to-vote. Voters wishing to apply to Ashford Borough Council for free ID should first make sure they are registered to vote – the deadline to register to vote at the election on 4 May is Monday 17 April. Don't delay, act today.



And our survey says.....

Residents' survey reveals satisfaction levels with council

Our latest survey indicates that residents' general views on the council and our performance have stayed consistently good. Satisfaction levels with key services remains high and efforts to improve community safety and communication with residents appear to have been effective.



Areas for improvement include residents continuing to feel they have little influence over council decisions while development and car parking provision in the borough remain areas where residents were less satisfied.

The survey asked a sample of our residents for their views about the council and specific service areas, their local area and other topical questions.



Feedback on the council's response to the pandemic was positive and residents were generally happy with our digitalisation efforts. The continued importance of accessible in person options for older and digitally excluded residents was also made clear.

Consistent performance

The survey was conducted to gather the views of our local residents from a statistically valid sample number. The results indicate that generally performance is consistent with previous years which, given external factors such as the pandemic as well as political and economic instability, is a positive outcome.

58% of residents felt well informed by council



59% satisfied with how we run our services



90% of residents satisfied with waste collections



44% feel a part of their local community



78% satisfied with their local area as a place to live



63% have pride in their local area

Room for improvement

The results will be used to improve our services and the way we deliver them, for example.

You said:	What we are doing:
You wanted to access services in a variety of ways including digital and non-digital means.	We will continue to improve our digital offer, AND present a range of ways to gain access to our services and alternatives to cashless payments.
Those surveyed said they felt it was difficult to influence decision-making.	We have been looking at how we engage and consult with our residents and increase the ways we can promote our consultations.
53% of people also expressed an interest in viewing council meetings online.	We are investing in technology which will make it easier to watch council meetings.

The full report and findings can be found on our website www.ashford.gov.uk/residentssurvey2022

Cost of living - eat well, spend less

Rising living costs mean many of us are trying to make savings where we can so here are some ways you could save money on food shopping and cooking...

Saving money on your weekly shop Saving money when you cook

If you are feeling the pinch and want to find out what you can do to make your weekly shop last longer why not try a few of these simple things and you'll quickly see how with just a few small actions you can make a real difference to your pocket.

- **Plan meals and write a shopping list.** Look at what you already have in your cupboards and fridge to see what you need to use up first and meal plan around who is in for meals during the week.
- **Give yourself time** so you can look for bargains and don't go on an empty stomach, you'll be less likely to make impulse buys.
- **Buy seasonal** fresh fruit and vegetables – these are cheaper.
- **Shop around to find the best deals.** Find out when fresh food usually gets reduced. You can often find fresh produce that has been marked down at the end of the day. You can freeze on day of purchase and use within three months.
- **Buy in bulk.** Shop with a friend so you can split bulk-buy discounts to save money without wastage. Only buy what you need or can store to avoid wasting food and your money. Bulk buy packs of meat or fish, separate them and freeze the ones you know you won't use by the use-by date. Buy larger pots of yoghurt or packs of cheese. You can grate cheese and keep it in the freezer for up to four months.
- **Buy own shop brands.** Cheaper products are not always at eye level so look up and down to find the best deal. Also look for 'wonky' and loose fruit and vegetables which can be much cheaper than pre-packed items.
- **Buy cheaper** cuts of meat and frozen fish.
- **Frozen or tinned** fruit and vegetables are just as good for you if not better and are often cheaper than fresh varieties. Stock up when there are good deals on.
- **Cook large portions and freeze leftovers** to save time and money. Save old plastic tubs like ice cream containers to put leftovers in.
- **Store your food right** – make sure you are storing your food in the right place to optimise its shelf life.
- **Roast a chicken and use the leftovers** in other meals like chicken stir-fry.
- **A full freezer is more economical,** so fill it up with leftovers, bread or milk. Thaw food overnight in the fridge and reheat until it's steaming hot. Never refreeze food if it's already been frozen and thawed.
- **Use a slow cooker or make one-pot dishes to save money.** These only cost 20 to 25 pence per meal.
- **Add vegetables, beans and pulses to make your meal go further and keep you fuller for longer.** Try to go half-and-half, can you swap half your beef mince for lentils? Or half your chicken for chickpeas? Try to have two meat-free days a week to help to keep costs down.



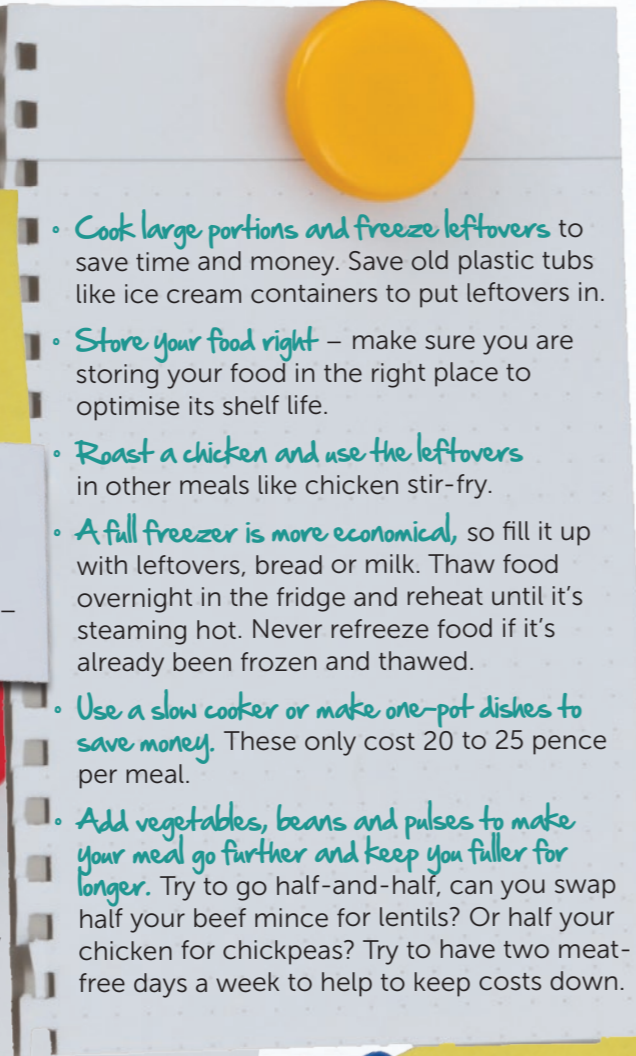
SAVE

One You Kent

If you want support to boost your motivation or kick-start some lifestyle changes, **One You** can help. They offer a free service to help you take the first steps towards a healthier lifestyle including support to go smoke-free, get active, eat well, drink less, stress less and improve your wellbeing. They also offer NHS health checks. You can pop into the **One You** shop in Park Mall Ashford, opening times can be found on the shop's website at: www.kentcht.nhs.uk/service/one-you-kent/one-you-shop or get in touch by calling 0300 123 1220 or visit: www.oneyoukent.org.uk Don't forget our Cost of Living Help pages on our website have lots of information and links for advice and support. Visit: www.ashford.gov.uk/cost-of-living-help

- **Use a top oven if you have one** for smaller items. Pre-cook jacket potatoes in a microwave first and cook a few things in the oven at once to be really efficient.
- **Mature cheddar** has a stronger flavour so you can use less. Grate into sandwiches to make it go further.

Visit www.nhs.uk/healthier-families/recipes for recipe ideas
You can also visit www.lovefoodhatewaste.com where you will find all the information you need to make more of the food you've already bought – and save time and money.



Job Club is here for YOU

With the cost of living rising, you may be searching for a new job but don't know where to begin. Luckily help is at hand and the Job Club at Ashford Gateway Plus is there to assist you.

It's a free to attend drop-in service that takes place on Fridays between 10am-1pm with staff available to help with:

- Online job searches and registering with online job sites
- Creating email accounts
- Creating and updating your CV
- Completing application forms
- Interview skills and techniques
- Careers advice
- Volunteering opportunities

Here's what one recent Job Club user had to say on their experience:

"I found employment with the assistance of the Job Club, after my employment ended. I returned to the Job Club to get my CV updated and to start seeking employment again. I also returned because the staff are friendly and helpful and I feel supported with my job searching."

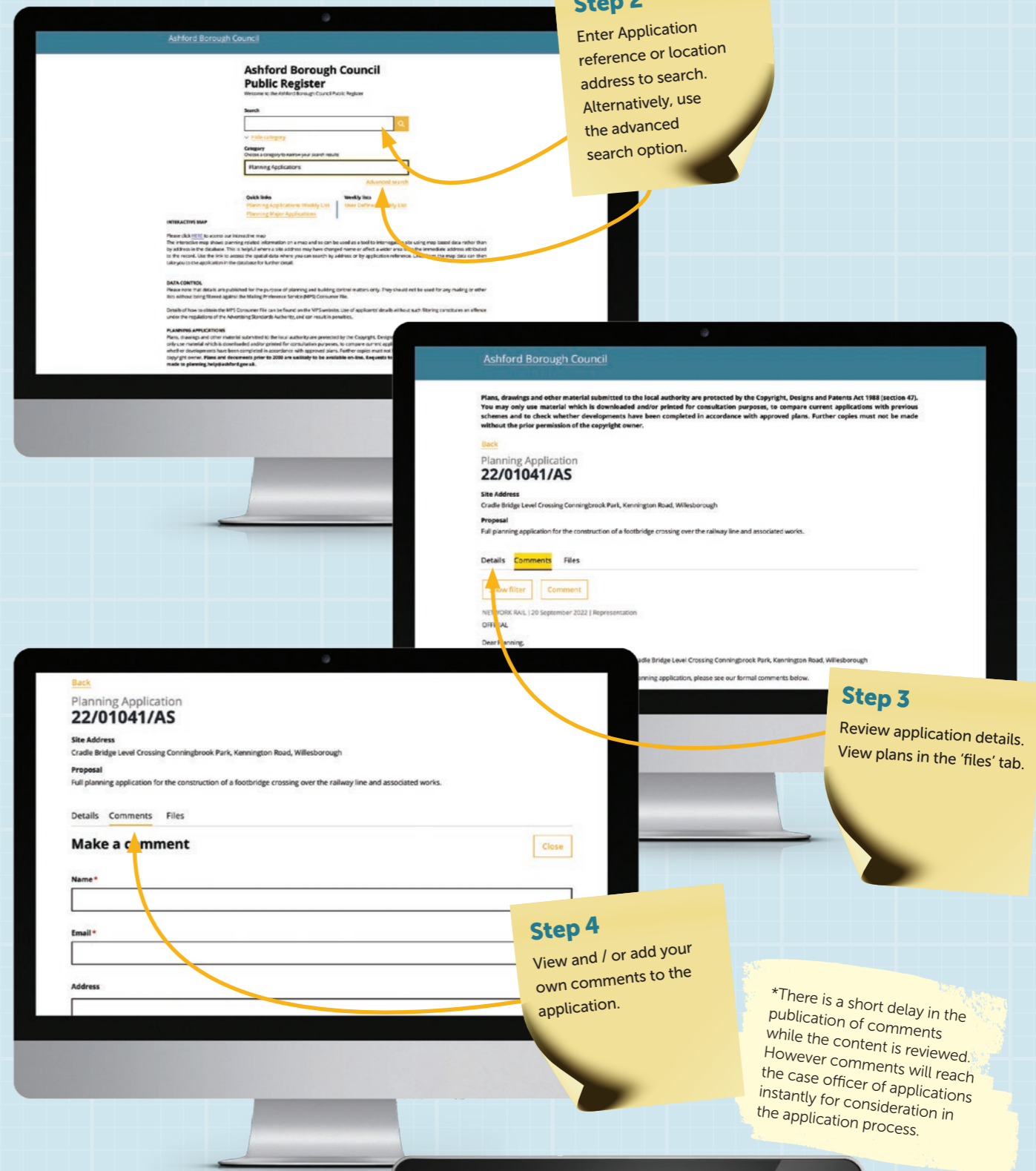
What are you waiting for? Your next career opportunity could be right around the corner. For more information visit www.ashford.gov.uk/job-club.



How to view or comment on planning applications



Step 1
Go to 'View and comment on applications'



Step 2
Enter Application reference or location address to search. Alternatively, use the advanced search option.

Step 3
Review application details. View plans in the 'files' tab.

Step 4
View and / or add your own comments to the application.

*There is a short delay in the publication of comments while the content is reviewed. However comments will reach the case officer of applications instantly for consideration in the application process.

Did you know you can view and comment on planning applications on our website?
www.ashford.gov.uk/application-search-help

All planning applications are visible on our Online Planning and Building Control application search tool.

This tool provides access to the public register and so also includes information on building control applications, tree preservation orders, appeals and enforcement.

As well as being able to view application details and plans of proposals, it also provides an easy to use facility to comment on applications open for consultation. Find out more online about the application process: www.ashford.gov.uk/the-planning-process

If you are unsure how to use the system, you may also like to view our planning system help webpages which will guide you further on what you can do and how to do it.

How do I search for information?

- ✔ Use the main search box if you know the application reference or use the address
- ✔ To find applications in your area use the advanced search options and search by parish/ward
- ✔ Select a 'category' before searching if you only want results from one category i.e. planning applications
- ✔ Use the interactive map to check certain areas for development, particularly if you do not know the site address
- ✔ If an application is subject to an appeal, the link to the appeal information will be on the relevant planning application
- ✔ When searching for planning application references for applications validated before July 2022, ensure you are using the leading zeros in the reference you enter eg. 22/00001/AS rather than 22/01/AS.
- ✔ Use the weekly list tool to get a list of valid applications each week or for a specified week.

Interactive Map

- ✔ Tick what information you want to see from the layer options
- ✔ Search by address or zoom into a location manually
- ✔ Click onto a site/address to show links to the public register for further information



Image courtesy of Ben Harries



About Jasmin

A leading force in British dance theatre for nearly 20 years, Jasmin Vardimon has built a reputation for challenging, exciting and visually stunning dance.

She continues to add to the body of critically acclaimed, artistically respected yet accessible work, both for the company she formed in 1997 and for some of the leading dance companies across the world.

Born and raised in Israel, she has been an Associate Artist at Sadler's Wells since 2006, Jasmin has also been recognised with the positions of Associate Artist at The Place in 1998 and at Yorkshire Dance as a Partner from 1999 – 2005.

In 2014 she was awarded an honorary doctorate from The Royal Holloway University and in 2018 she received an honorary fellowship from the Institute of the Arts Barcelona. Jasmin received an MBE in the Queen's Birthday Honours for service to dance, in June 2022.

"The opening of JVHome is a dream come true and signifies the beginning of an exciting new period for the company. The building and its amazing facilities provide the perfect environment in which to make new work, run our creative learning programmes and collaborate with our neighbours."

- Jasmin Vardimon

Taking centre stage

Leading UK dance company unveils state of the art space...

A major new arts hub for the county, providing a long-term base for internationally renowned dance company Jasmin Vardimon, welcomed visitors in late 2022. The new building will include space for the creation of the company's touring productions, rehearsals, training, educational and community classes, plus incubator space for small creative businesses.

Having been based in Ashford over several years, Jasmin and her company have played a vital role in raising the county's creative and cultural profile and their new home will enable them

to expand their connection with the local community and support emerging talent.

The company's building is part of the regeneration of the formerly disused site on the Henwood Industrial Estate, called the Creative Enterprise Quarter. The development will also become the home to other arts organisations in order to encourage connections and collaborations within a thriving arts community.

One of the first of these is the leading music education charity Kent Music, which has moved from Maidstone to become JVC's new neighbours.



Images courtesy of Jasmin Vardimon Company



Image courtesy of Ben Harries

Creative learning

Jasmin Vardimon Company offers an exciting and varied education and training programme.

Jasmin's vision to nurture talent and potential is at the heart of their offer to the community they live in and for those who share their passion for dance.

Providing insight into Vardimon's choreographic, theatrical and artistic process, they nurture and support training versatile performers via the development of dance and theatrical skills. They offer various workshops including masterclasses, residencies and

bespoke projects to participants from children to professionals.

They also offer work placements and internship opportunities, qualification and curriculum support (e.g. Arts Award, GCSE, A Level, BTEC), and opportunities for children, young people and adults that would not otherwise engage, watch, or participate in the arts.

The programme is available for a diverse range of participants from all backgrounds, ages and abilities, including disadvantaged, disabled, and hard to reach groups.

The extra space provided by their new JVHome has already enabled additional delivery and 'cross pollination' between the local community, schools and professional participants, now all engaging under one roof.

The building was constructed by Kent-based WW Martin and the overall project received funding from the South East Local Enterprise Partnership and Arts Council England alongside KCC and ABC.

For more information visit: www.jasminvardimon.com



"Having been based in Ashford over several years, Jasmin and her company have played a vital role in raising the county's creative and cultural profile. This project will provide a high-quality facility for the company and we look forward to seeing its further development."

- Mike Hill, Kent County Council

Grow your own

Chances are, you have heard of the importance of knowing where your food comes from and eating what is in season, but if you have never gardened before, it can be exciting and scary to think about growing your own food.

It does require some knowledge, time, and patience, but there is nothing like tasting something you have grown yourself. Whether you have a spacious garden or a tiny balcony, you can grow your own fruits, herbs, or vegetables to enjoy.

Why grow your own?

There are many reasons why people choose to grow their own, even though it's so easily available from supermarkets. Not only is it good for the environment as there isn't transport cost associated, you can control what you use to grow your food and avoid using chemicals. You will also find that you will eat more fruit and veg as it is easily available and is low-cost, healthy, family friendly activity.

Everyone has to start somewhere! It may seem like a big task at first but here are some tips that everyone starting out should know. And when in doubt, be patient!

1. Choose your site carefully, making sure there is some sun throughout the day.
2. Choose what you are going to grow them in. You don't need an allotment; you could use containers, an existing flower bed or replace a section of lawn.
3. Start small as some plants are easier to grow than others, such as lettuce, beetroot, and radish.
4. Choose fruit and veg you enjoy eating, then you will be invested in seeing them grow.
5. Make sure you have a water supply to water them with when the weather is dry.

Want more tips and ideas on growing? You can sign up to our Allotment Officers newsletter for seasonal advice on harvesting and planting to help you get the most out of your space.

www.ashford.gov.uk/allotment-newsletter



Garden waste

It has never been quicker or easier to sign up to our collection service, leaving you more time to enjoy your outdoor space. Visit www.ashford.gov.uk/garden-waste

Feed your food caddy

Did you know food is our biggest cause of contamination in our recycling collections? Food misplaced in your recycling bin (green) causes the whole collection load to be rejected at the recycling centre – that's up to 25 tonnes worth!

If you have food left in a container that can be recycled, please take the time to feed your food caddy, rinse the container and place in your recycling bin. #RinseltBinIt. Not only does this help increase our recycling figures it also helps the environment!

So what happens to your food waste collected in your food caddy?

Around 36,000 tonnes of food waste is collected in Kent, and it is taken to an anaerobic digester at Blaise Farm Quarry near Kings Hill to be turned into biogas. Anaerobic digestion is the process of breaking down food without the use of oxygen.

The biogas is fed to the national grid as well as powering the plant itself. The gas and electricity produced from the food waste is enough to power 3,600 homes as well as produce farm fertiliser.

Some of the items you can place in your food caddy are:

- Meat, fish and bones
- Fruit and veg, including peelings
- Bread, pasta, pulses and rice
- Solid butter and lards

You can find the full list of items on our website at www.ashford.gov.uk/food-waste

Love Food Hate Waste

Food Waste Action Week 2023 will take place 6-12 March, aimed at showing how valuable food is in our lives, and how using up everything we buy saves money, time, and the planet. For more information on shopping, planning, preparing, and cooking food visit www.lovefoodhatewaste.com/good-food-habits

We supply food caddies free of charge and replacements can be requested on our website at www.ashford.gov.uk/request-a-bin or by calling us on 01233 331111.

New waste contract coming 2024

As part of the Mid Kent Waste Partnership with Maidstone Borough Council and Swale Borough Council, we have awarded our new eight-year waste and recycling contract to SUEZ Recycling and Recovery Ltd. The new service begins in March 2024. You can find out more information on our website at www.ashford.gov.uk/new-waste-contract-2024



Be a litter hero



Last year our litter heroes continued to keep our parks and streets clean.

In the spirit of The Great British Spring Clean coming up 17 March-2 April why not arrange your own! Did you know we loan out litter picking equipment and even collect your rubbish afterwards?

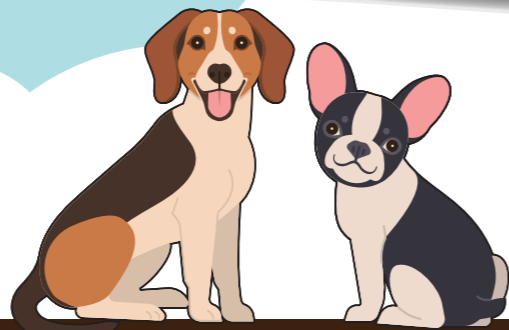
Alternatively, we have many regular litter picking groups in the borough, so if you are interested in taking part, why not find out when your local group meets.

If you are an individual or group who wants to clean your local area, then visit the litter free Ashford page on our website to find out more at www.ashford.gov.uk/litter-free-ashford.



Tackle one piece of litter at a time

Be in with the chance of winning instant cash prizes each month, from £5 to £250, as well as the jackpot by simply binning your litter. All you do is download the Litter Lotto app and take a picture of you putting your litter in a bin! All litter counts from a crisp bag to a takeaway meal box, and with every piece of litter binned, you get another entry and more chances to win prizes.



Bag it and Bin it!

We know most dog owners clean up after their furry friends, but the minority can ruin public spaces for others. Remember you can use any public litter bin to dispose of the mess. Leave only paw prints behind - or face the risk of being given an on the spot fine!

Seen someone not picking up after their dog or overflowing bins? Report it on our website for our enforcement team to investigate at www.ashford.gov.uk/environmental-concerns/dogs



Explore Victoria Park

Children from Ashford Oaks Community Primary School, Beaver Green Primary School, John Wesley School and St Simon's Primary School attended workshops with artist Becky Vincer to create pages for a new school's resource book 'Victoria Park Sketchbook'.

The creation of the book and the workshops took inspiration from the 'Wreck This Journal' by Keri Smith, a book that encourages creative thinking. The new schools' resource is suitable for a KS2 level and will identify and explore the flora and fauna, history and the science and geography of the park.

You can download your own copy of the sketchbook to take to the park, along with some simple art materials to find new ways of looking, making and enjoying Victoria Park and Watercress Fields! To download the sketchbook head to www.victoriaparkashford.co.uk



Works to improve Victoria Park are still well underway throughout, but we will be sharing more updates as we hit the final stages very soon. For the latest news visit www.victoriaparkashford.co.uk

Follow on Twitter @VictoriaParkABC, Facebook @VictoriaParkABC and Instagram @victoriaparkashford

What's On

Ashford Museum expands



Ashford Museum, located in the Church Yard opposite St. Mary's Parish Church, has expanded with the opening of its new Conservation Annexe at 57 High Street. Supporters of Ashford Museum were on hand to celebrate its launch and all of the hard work that the dedicated team have accomplished in creating this new space.

The Annexe has been delivered thanks to the Council's Empty Property Grant scheme that was launched in 2021. These grants facilitated and supported the occupation of vacant commercial units within the priority areas of the town centre. The scheme has supported the opening of five other vacant premises.

Ashford Museum is now closed for the seasonal period and will reopen in April. The Museum displays artefacts relating to the Borough and its people including medical instruments from the old Ashford and cottage hospital, railway memorabilia and objects from the Neolithic, Romano-Briton and Anglo-Saxon periods.

For more information visit: www.ashfordmuseum.org.uk

UNFRAMED in Ashford Ashford town centre is about to become even more colourful this spring as we launch UNFRAMED, our first Mural Festival. Local and national artists will team up with landlords to animate blank walls, creating a free, accessible arts trail and outdoor gallery. More details will be released soon, so keep an eye on: www.loveashford.com

Revelation Ashford line up

**NEARLY ELTON –
Elton John Tribute Concert**

4 March 2023
7:30pm to 10pm

**VERY SANTANA –
The Ultimate Celebration of Carlos Santana**

18 March 2023
7:45pm to 10:00pm

**COUNTRY SUPERSTARS –
Dolly Parton and Friends Tribute Show**

1 April 2023
7:30 to 10:30pm


CELINE – My Heart Will Go On

21 April 2023
7:30 pm to 10pm

**MADDY PRIOR & THE CARNIVAL BAND -
Chapel and Tavern**

22 April 2023
7:45pm to 10:30pm

www.revelationashford.co.uk



Have you seen our new tourism video?

We have launched our new tourism video which showcases the very best that the borough has to offer. The video takes a 'dusk to dawn' approach, featuring attractions and experiences that can be enjoyed on both a local day out or during a longer staycation. Featured are Kent & East Sussex Railway, the Rare Breeds Centre, Ashford Designer Outlet, Hole Park and Curious Brewery. The video can be seen on a permanent loop at the Designer Outlet in the Guest Services area, as well as on our Experience Ashford and Tenterden website at: www.experienceashfordandtenterden.co.uk

Easter at Brook Museum



Visit Brook Agricultural Museum on Saturday 8 April from 10am-3pm for a day of family fun inspired by the history of wheat and milling in Kent. Meet local farmers using sustainable practices inspired by the past and find out about milling at Willesborough Windmill, built in 1869.

Drop-in activities for all ages, including:

- Kids' Easter Bunny trail, planting and pot painting.
- Pizza making workshop (drop-in session running every 30 mins from 12pm to 2pm).
- Wheat weaving workshop, making corn dollies.

Entry is £5, children under 16 free

The Brook Museum is at The Street, Brook, Ashford TN25 5PE. This initiative forms part of the *Securing the Future of Brook Museum – Engaging New Audiences* Project, supported by The National Lottery Heritage Fund.



The dangers of looking good



If you are thinking of getting a cosmetic treatment you may end up with more than you bargained for.

There are currently no official industry regulations or qualification standards to ensure non-surgical cosmetic procedures for adults such as Botox, fillers, laser treatments or permanent make-up procedures are performed safely. In fact, some of the drugs used in these injectable treatments (such as Botox and vitamins) are prescription only.

Serious reactions can include infection, burns, scarring, a lumpy appearance under the skin (which might need to be treated with surgery or medicine), filler moving away from the intended treatment area (which may need to be removed using surgery) and blocked blood vessels in the face (which can cause tissue death and permanent blindness).

There could be many more adverse reactions that are unreported due to embarrassment or being unsure who to report it to.

With more of us now considering such treatments the Chartered Institute for Environmental Health is calling for amendments to the Health and Care Bill to be brought in to protect consumers. These could include:

- a national licensing scheme
- set standards for training, qualifications and competency requirements for practitioners
- practitioner insurance

Any changes to regulations could come into force in 2025.

In the meantime, if you are thinking of getting a cosmetic procedure the NHS website has some excellent advice on how to check your practitioner has the right credentials to do so. Visit www.nhs.uk/conditions/cosmetic-procedures/choosing-who-will-do-your-procedure

KEEP ASHFORD TALKING

ARE YOU a YOUNG PERSON EXPERIENCING CONFLICT within a SCHOOL OR COMMUNITY SETTING?

ARE YOU EXPERIENCING PROBLEMS WITH YOUR NEIGHBOURS OVER anti-social BEHAVIOUR, NOISE OR BOUNDARY ISSUES?

ARE there INTERGENERATIONAL ISSUES in YOUR FAMILY that are CAUSING ENDLESS ARGUMENTS and STRESS?

The Ashford Mediation Service (AMS) is a **free service** available to all residents experiencing conflict. We don't 'take sides', we work with all parties in dispute to help both 'sides' reach a solution that works for everyone.

Tackling conflict at an early stage prevents the breakdown in relationships and reduces issues with mental health and wellbeing, homelessness, and crime.

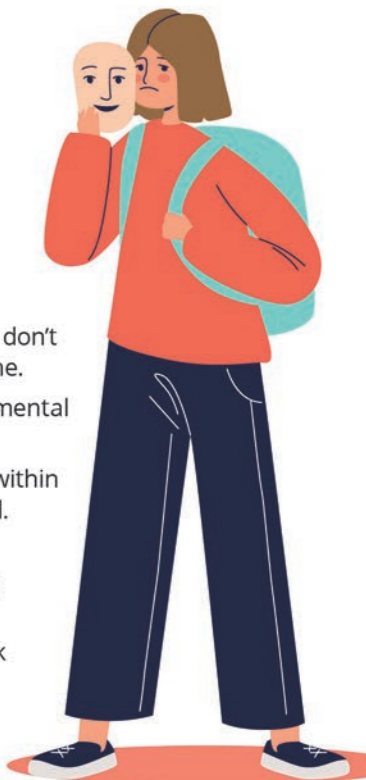
Our Keep Ashford Talking project now focuses on two specific audiences – 'disaffected' young people within a school or community setting, and families who live in the more deprived neighbourhoods of Ashford.

Although programmes exist for young people, the missing link is providing them with the skills to mediate themselves. We will work with schools and youth groups to equip staff, mentors and young people with mediation and negotiation skills.

There are a disproportionate number of ASB incidents and disputes in specific areas, so we will work with community leaders to support individuals in resolving their differences.

It is with grateful thanks to the Kent Police & Crime Commissioner's Fund that we can expand our services in Ashford.

Take that FIRST STEP and get in touch today



Call us on 07845 914838 or email info@ashfordmediation.co.uk
Quote reference PCC. Visit www.ashfordmediation.co.uk



Echoes of our past



Did you know that our borough has rich historical and military roots? Perhaps lesser known to some but certainly never forgotten. Read on to find out how you can play a part in marking these important milestones...

HMS Albacore sails on

On 28 February 1942, the people of Ashford marked the official adoption of the borough's warship, HMS Albacore, following a successful week of fundraising during the national Warship Week. HMS Albacore was part of the 12th minesweeping flotilla based in the Mediterranean and received several battle honours.

During our late Sovereign's Platinum Jubilee Celebrations in June 2022, a newly-created HMS Albacore Memorial was dedicated in Ashford's Memorial Gardens and a specially designed ship's ensign was presented. This will be officially raised and flown at the Civic Centre on 28 February 2023. To mark this occasion, a wooden reproduction plaque of the ship's badge has kindly been crafted and donated by local carpenter Ben Sharp.



Hayward's Garage bombed, March 1943
(c) Ashford Borough Museum



Dover Place, Kent Arms bombed March 1943
(c) Ashford Borough Museum



80th anniversary of Ashford's most devastating bombing raid

During World War Two, Ashford Railway Works was a prime target for German bombers. Between 1939 and 1945 around 4,000 air raid alerts sounded and bombs regularly fell in the vicinity.

The worst incident occurred on 24 March 1943 when an air raid that lasted just three minutes killed 52 civilians, one RAF pilot and seriously injured a further 78.

Although the railway works was the main target, the surrounding areas were also badly hit. Severe damage occurred in New Street, Hayward's Garage, Dover Place, New Rents, Star Road, Hardinge Road and Kent Avenue.

During the raid, a bomb fell on Beaver Road Primary School, formerly located on the corner of Beaver Road and Victoria Road. Thankfully, the sirens sounded in time and the children managed to get into the playground shelters. Long before the all-clear sounded, parents rushed to the school to find the children unscathed. Miss Adams, the Head Teacher, received an award for her actions, which ultimately saved the lives of the children.

To mark the 80th anniversary, a small service of reflection will take place in Ashford Memorial Gardens on 24 March 2023.

Save the date for Armed Forces Day

Armed Forces Day is an opportunity each year to thank the Armed Forces community for their work and to learn more about life in the Armed Forces. This year, the event is on Saturday 24 June and our Raising of the Flag ceremony will take place outside the Civic Centre on Monday 19 June to launch Armed Forces Week. To learn more and to get involved visit www.armedforcesday.org.uk/get-involved



©UK MOD Crown Copyright 2022

As a proud member of the Armed Forces Covenant, we've pledged to work with the Armed Forces and our community to support regular and reservist servicemen and women, veterans and service families. For more information visit www.ashford.gov.uk/armed-forces-covenant

War on tenancy fraud

A campaign in April to clamp down on tenancy fraud in Kent highlights the different types of housing fraud that can be committed and what the penalties for this criminal offence are.

Adam Simmonds, Chair of the Kent Tenancy Fraud Forum, which is part of Kent Housing Group, said: "Tenancy Fraud occurs when a local authority or housing association home is occupied by someone who is either not legally entitled to be there, has obtained use of the property fraudulently or leaves the property empty while living elsewhere. Penalties include a jail term of up to two years and fines of up to £50,000."

The courts also have the power to make the tenant pay back any profits made from the fraud. This fraud restricts the amount of housing available to those genuinely in need and is a drain on the public purse, since those who are left without a home often have to be housed in costly emergency accommodation.

The main types of tenancy fraud are:



Subletting: A tenant rents out all or part of their property to someone else without the landlord's permission.

Application fraud: A prospective tenant provides false information on their housing application or applies for multiple properties in different locations and through different landlords.

Right to buy/right to acquire fraud: A tenant provides false information when applying to buy the house they live in under the scheme.

To report a suspected fraud in the Ashford borough email fraud@ashford.gov.uk, call 01233 330456 or complete the form on our website.

Condensation in the home

The Council is writing to all residents in our properties and asking you to get in contact immediately if you have any concerns about condensation, damp and mould in your homes.

Accompanying the letter will be a helpful leaflet explaining our responsibilities as a landlord and the checks that we will undertake to ensure there are no property faults contributing to such issues. It will also detail the steps that can be taken to reduce condensation in the home.

If you have any concerns email damphelp@ashford.gov.uk



LANDLORDS WE NEED YOU!



ABC Lettings has tenants ready to move into your rented properties today AND we can offer a flexible package of financial incentives for private sector landlords.

DON'T DELAY - CALL US TODAY!

Find out more about our fully managed service and how you can sit back and relax while we take care of the process from start to finish. We know and assess all our tenants and are a no hassle, no hidden cost lettings service and are not motivated by profit.

ABC Lettings already successfully manages more than 300 properties across Ashford, Folkestone and Hythe, and our experienced managers offer you the security of working with an organisation with a reputation for a careful and considered approach.

Our fully managed service includes:

- A **guaranteed** rental income, paid monthly and in advance
- We tenant your property within two weeks (subject to all the necessary checks)
- Boiler breakdown cover and annual gas safety check
- Inventory / check out
- 24 hour emergency repair support
- Routine property inspections
- Tenancy renewals

Letting your property is as easy as ABC!



And talk to us TODAY to learn more about financial incentives for private sector landlords...

Call ABC Lettings on 01233 330811 or email abclettings@ashford.gov.uk

WIN

Family Passes on Kent & East Sussex Railway



Spring is for adventures! For a truly memorable, historic one – whatever the weather – jump aboard a heritage steam or diesel train and sit back in comfort to ride through the unspoilt countryside from Tenterden to Bodiam. You can even pre-book a kids munch bag for them and treat yourself to a cream tea or ploughmans. We're dog-friendly so the family pooch can come too!

We have four family passes up for grabs, each enabling four people (two adults and two children or one adult and three children) to enjoy a fun-filled day. Passes are valid for one visit, for one year from date of issue, and exclude refreshments and special events. For full details of services visit kesr.org.uk



WIN passes for Godinton House & Gardens

Godinton House & Gardens is Ashford's hidden gem where sheep graze in ancient parkland graced by magnificent trees.

Wander through the peaceful 12-acre formal gardens to discover an elegant Italian Garden, a pretty Rose Garden and a Walled Garden filled with flowers, fruit and vegetables.

Birdsong fills the air in the wild garden and from the lawned terraces soak up views over the estate and Godinton House, a 600-year-old red brick property that retains the warmth of a much-loved country home.

Homemade teas are served in the house on Fridays and Saturdays while the ticket office is open from Tuesday to Sunday selling tea and coffee, cakes and ice creams.

The gardens open from 1 March (entry £8) and the house opens from 7 April (entry to house and garden £15). Garden opening times 1pm-6pm (last entry 5pm), see website for House opening times. Look out for special events including the Delphinium Festival, Sculpture in the Garden Exhibition and open-air music and theatre evenings.

We are offering three joint Garden Season Tickets and three House & Garden tickets for readers to enjoy this magnificent historic House & Garden, to be used during the 2023 open season.

Book a visit online at godintonhouse.co.uk



To enter your name into our Kent & East Sussex Railway draw or Godinton House & Gardens either:

* Email the editorial team at competition@ashford.gov.uk – put **KESR competition** or **Godinton House & Gardens** in the subject heading and include your full name, postal address and email. Please include a contact phone number.

* Send a postcard or sealed envelope with your name, address, email and contact phone number to: *Ashford For You* magazine, Communications, Ashford Borough Council, Civic Centre, Tannery Lane, Ashford TN23 1PL. Write **KESR competition entry** or **Godinton House & Gardens competition entry** on the card. We will contact the winners to request consent to provide your contact details to KESR to enable you to claim your prize.

Terms & conditions: 1. The competition is open to UK residents aged 18 years or older except employees of the Promoter, their families, agents or any third party associated with the competition. 2. The closing date of the competition is **12 noon on Wednesday 29 March 2023**. Entries received after this time will not be included. The prizes are non-transferable and non-refundable. There are no cash alternatives. 3. By accepting the prize you also agree to be bound by standard terms and conditions specified by the prize providers. Only one entry per person. Editor's decision is final. Ashford Borough Council is the data controller for the personal information you provide us and this will be used to circulate our magazine and keep you up-to-date on recent news and events. Collecting and processing of your personal data is being conducted relying upon the legal basis of consent. You have the right to remove your consent at any time by sending 'unsubscribe' to media@ashford.gov.uk. The option to unsubscribe will be offered each time we contact you. We will not share your information with any third parties unless we are required or permitted to do so by law. Your information will be held for as long as we produce a residents' magazine and you stay subscribed. For more information about your data protection rights see our data protection pages at www.ashford.gov.uk or contact the Data Protection Officer, Ashford Borough Council, Civic Centre, Tannery Lane, Ashford TN23 1PL.

AT THE HEART OF ASHFORD

OUR PLACE, YOUR PLACE, ELWICK PLACE



Elwick Road, Ashford, TN23 1AX
elwickplace.com

LAUGHLAND JONES



Picture house

snap fitness 24/7

The Snug



UNITÀ 4



S



N



L

Q



G

U



E

A



M



L

Step into Spring at County Square From **A-Z** in Ashford

next



Superdrug



The Works

Waterstones

NEW LOOK



PANDORA

The Entertainer

COSTA

COUNTY SQ

countysquashoppingcentre.com    

