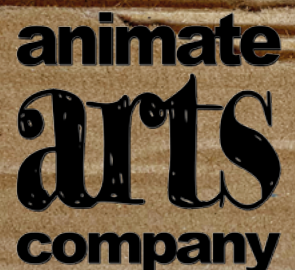


The Ashford Tree Trail



Activity Pack

The official guide to decorating a tree for the Queen's Platinum Jubilee 2022





What is The Ashford Tree Trail project?

The Ashford Tree Trail is a special community arts project for the Queen's Platinum Jubilee Year that will see a visual spectacle growing across Ashford town centre from 2 - 26 June 2022.

We are inviting the local community, including residents, schools, community groups and local businesses to create a trail of decorated trees. There will be some trees on display in-person in the town centre, and there will be even more featured on a virtual map!

Every tree on the trail, whether real or artificial, will be adorned with decorations made with recycled materials and inspired by The Queen herself. From Corgi Trees to Postage Stamp trees, we invite Ashford to get creative and go green for the Jubilee celebrations!

This free pack has been written by professional artists. It is full of inspirational starting points about the Queen, ideas of how to decorate a tree and has some suggested step-by-step tree-decorating activities using recycled materials.

Whether you follow these activities or create your own, when you have decorated your tree, you can enter your artwork to feature on the official Tree Trail!

So, invite your household/community group/business to get creative. Let's grow the most fantastic display of decorated trees across Ashford to celebrate the Queen's Platinum Jubilee!



Recycling and Art

"I hope people will think very carefully about the future"

HM Queen Elizabeth II

Go Green!

Ashford is passionate about living in greener and healthier ways. The Tree Trail project encourages you to recycle, reuse and re-purpose materials to create your tree decorations.

There will be one central tree on the trail called the Jubilee Blossom Tree. This tree will be crafted by artists from Animate Arts and made entirely from paper and cardboard!

You can decorate a real tree or an artificial tree. You could even build your own tree from recycled materials like the Jubilee Blossom Tree!

At the end of the Jubilee celebrations, we invite all participants to re-use or recycle their work. You can pick up some good recycling tips from the official Tree Trail page www.ashford.gov.uk/ashford-tree-trail





"Trees have been a part of the Queen's life all her life. She dreams of creating a global network of forests"

Sir David Attenborough reflecting on a conversation with HM Queen Elizabeth II

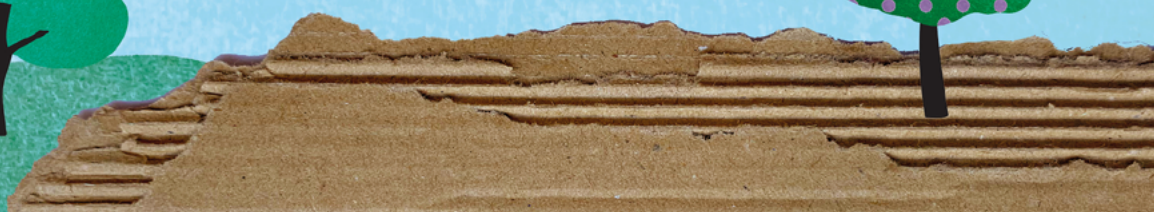
About the Queen's Platinum Jubilee

Her Majesty The Queen will become the first British Monarch to celebrate a Platinum Jubilee, marking 70 years of service to the people of the United Kingdom, the Realms and the Commonwealth.



To celebrate this unprecedented anniversary, there will be a four-day UK bank holiday weekend from Thursday 2 - Sunday 5 June 2022, with lots of events and celebrations taking place in communities across the UK.

In Ashford, as part of the Jubilee, we will create **The Ashford Tree Trail**. With the help of artists, local groups and residents we would like to create 70 decorated trees to reflect the 70 years of the Queen's service, her love of trees and the environment.



"I believe that, young or old, we have as much to look forward to with confidence and hope as we have to look back on with pride."

HM Queen Elizabeth II

Need inspiration?

You will need to decorate your tree with artworks and creations inspired by The Queen, her achievements and jubilee. Here are some interesting facts that could inspire your designs.

10 facts about coronations and jubilees



1. At the Queen's coronation in 1953, she wore a crown, the Imperial State gown, and carried an orb and sceptre.

2. A special commissioned dress for the Queen's coronation featured a English Tudor rose, Scottish thistle, Irish Shamrock and a Welsh leek to represent the four nations.

3. 70 years of service is a platinum jubilee. Platinum is one of the purest precious metals. In fact, there is more platinum on the moon than on Earth!



4. The Queen's head has featured on Royal Mail postage stamps since she became Queen. There were four different stamp designs issued on her coronation.

5. The Royal Coat Of Arms of the United Kingdom can only be used by the Queen. It includes a lion and a unicorn.

6. There have been many street parties for the coronation and jubilee celebrations. Many of which have been decorated with flags and bunting.



7. The coronation crown is kept in the Tower Of London, protected by Beefeaters and ravens

8. It rained a lot on Coronation Day

9. The Gold State Coach is used for all coronations. It is drawn by 8 horses.



10. The Queen is anointed with holy oil at the Coronation. The oil is said to contain a secret mixture of sesame and olive oil, with orange flowers, roses, jasmine and cinnamon.

10 interesting facts about the Queen:

1. She was the first monarch to appear in a televised coronation and the Christmas messages.

3. She was in Kenya when her father died and became Queen.

5. The portrait of the Queen on coins has changed 5 times in 70 years!

7. The famous, royal wave is a gentle, gloved wave. It is said to be gentle to prevent the Queen from injury because she has a lot of waving to do!

9. She has two birthdays (that's lots of birthday cake!).

2. She is the Queen for 54 Commonwealth countries around the world.

4. She's travelled into space when astronaut Helen Sharman took a picture of the Queen with her into space.

6. The Queen trained as a mechanic in WWII, and drives Range Rovers.

8. The Queen has sent thousands of 100th birthday cards in her reign, but in her 1st year there were only 100 people over 100 years old to send a message to.

10. The Queen was born in a house in Mayfair, London. The house is now a fancy shop!

5 things that the Queen loves:

1. Animals! She owns corgis, horses, swans, 2 x jaguars and 1 x sloth

2. Her favourite fruit is a strawberry



3. Her family, from her beloved Prince Philip to her grandchildren, the Royal family are very important to her.

4. Wearing colour. Over the 70 years she has worn every colour of the rainbow!



5. Out of the seven official Royal residences, Balmoral Castle is said to be her favourite home.



Need a tree?

If you haven't got a real tree to decorate, how about making your own tree? You can display indoors or outdoors, choosing the materials and size to suit your space. Here are some ideas of how to make a tree.

Twig tree: Bind together a handful of twigs and 'plant' into a heavy base You could try:

- Rolling a long length of corrugated card around the stem to form a base. Tie in place.
- Filling an empty tin-can with earth, sand or rice. Poke the stem into the can's filling, and decorate the outside.
- Wedge your stems into the hole of an upturned plant-pot.



Junk Model tree:

Use recycled materials like carpet tubes and cardboard boxes to construct a tree. We recommend building your tree on a heavy parasol base to give it stability.



Slot-Sculpture tree:

Using cardboard tubes and circles slot together to make tree sculpture.



You can decorate the circles with Queen's Jubilee drawings.

Follow our step by step mini paper tree activity on page 8.

Hanging branch tree:



Use twigs and fallen tree branches and string together to create a hanging wall tree

Hula hoop tree:

Cable-tie together some old hula-hoops (ideally green) to make a 3D sphere shape. Hang from the ceiling. Create a light-weight paper or fabric tube and fix under the hoops to form the trunk.



TIN-CAN ORNAMENTS

Make these spectacular, 3-tiered ornaments for your tree. We customised our tin-cans to represent the Queen's 54 Commonwealth flags, but you can easily adapt their decorations to represent and feature anything inspired by the Queen and her jubilee!



1. Carefully remove the paper label from the tins (save them, because they can be used as templates later). Thoroughly empty and clean your tin-cans.

⚠ Be very careful of any sharp edges on the tins!

2. Tap a hole into the top of each can, using a nail and hammer. This needs to be big enough to thread your string through. ⚠ Ask an adult to help you with this.

3. Draw around each of the tin's paper labels to get an accurate outline of the tin's wrap.

4. Choose a flag that you want to create as an ornament (see the commonwealth flags below). How can you place the flag's main symbols and colours over the three tins? You might wish to sketch some ideas

5. Use the paper label templates to work out your design.



6. When you have created a flag design, find the correct colours in your fabric.



7. (If using fabric) Using the paper label templates, cut out the tin wraps in the main flag colour from fabric. Then cut-out all the individual shapes to build up your design. Using PVA, glue these onto and around the tin.



(If using paint) Referring to your design, use a pencil to mark-up the design direct onto the tins. Use these guidelines to paint your design on the tins.

8. When dry, your tins may need an extra coat of PVA to protect the design. Allow to dry.

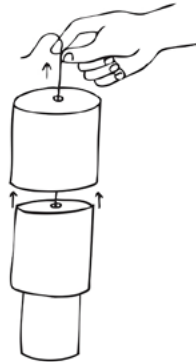
9. Make a loop of string (with a large knot). This loop, from top to toe, must be the length of your middle tin. Thread it through the hole of the smallest tin, from the inside outwards (so the knot is inside the tin). It will look like a tin-can bauble.



You will need:

- 3 x different size tin-cans per ornament
- String
- A nail and hammer (or similar)
- PVA glue & brush
- (Optional) Plastic bags, ribbons or unwanted thread
- Scrap paper and pencils for sketching designs
- Scissors
- Colourful fabric – old t-shirts, unwanted scraps OR Left-over household paint or acrylics OR Coloured paper (if being displayed indoors)

10. With another long piece of string (unknotted), thread through the loop of the small can. Knot the strings together to make a new loop. Poke the loop through the second tin (from inside outwards). It will look like a two tin-can bauble.



11. Repeat the same process for the third tin. Your three tins should join together and look like a 3-tiered ornament.

12. For a final (optional) flourish, you can add tassels and decorations to the bottom of the ornament by attaching inside the smallest tin.



The Commonwealth



PLATINUM JUBILEE BUNTING



Create platinum coloured bunting from recycled crisp packets and customise with Queen inspired messages.

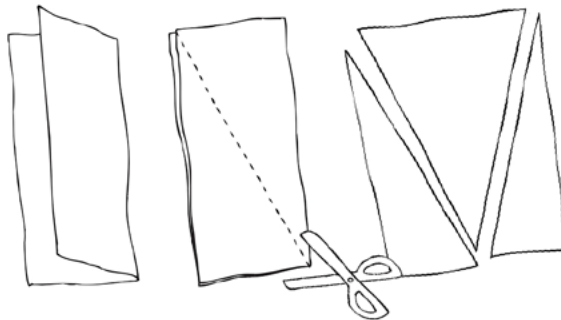
This bunting is made from recycled materials that is waterproof, so you will be able to use it outdoors!

1. Cut-off the sealed end of the crisp packet, then cut along the side of the crisp packet to open it out into one complete rectangle of platinum-coloured foil.

2. Fold the opened packet rectangle length ways. Cut the folded packet, from the outer corner to the fold at the bottom, like this. When you open it up, you will have made a traditional bunting triangle!

3. Punch holes in both top corners, and thread onto string/ribbon.

4. Repeat to get multiple triangles on your bunting!



You can decorate your bunting by adding symbols or lettering to each flag. We created Queen inspired words and messages.

1. Use plastic bags or the coloured side of the crisp packets to cut-out letters or symbols. (You could use a marker pen to draw your letters/shapes before cutting out).

2. Stick onto the silver flags, using glue sticks or sticky tape to attach.



Here are some ideas for messages:

Happy Platinum Jubilee!

Thank you for 70 spiffing years

Ma'am as in Ham

God Save The Queen

Happy Birthday Baked Bean! (cockney slang for 'Happy Birthday Queen')

MINI PAPER TREES

For easy-to-make and space-saving tree artworks, create some mini decorated trees using cardboard tubes and card. Raid your recycling bins to create these lovely trees!

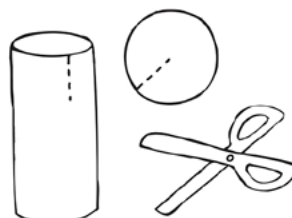
1. Chose a tube to be your tree trunk. Cut 2 or 3 slots on the top of your tube.

2. Cut different size circles and semi-circles from the thin card.

3. On these circles, decorate with Queen-inspired illustrations and messages.

4. Carefully cut 1 or 2 slots on each of the circles at different places around the edge.

5. Slot circles into the trunk slots. Then slot circles to these circles, and repeat. You will careful build a sculpture of paper circles to look like the foliage of a tree.



You will need:

- Cardboard tubes; toilet rolls, kitchen rolls, wrapping paper rolls, poster tubes.
- Scissors
- Colourful thin card
- Pens and pencils

BOTTLE-END BAUBLES

Make more from single-use plastic bottles and create glorious baubles displaying special pictures and objects to celebrate the Queen.



1. Cut-off the bottles in half. ⚠️ Ask an adult to help you with this!

You will need the two bottom halves to make a bauble. Check they fit inside each other and aren't too loose or squished.

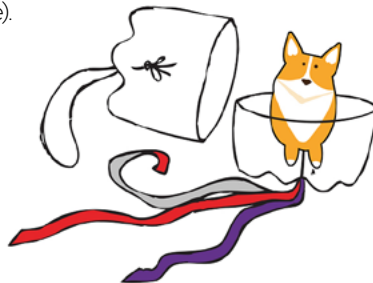
2. Carefully poke a hole in the end of each bottom. ⚠️ Ask an adult to help you with this!

3. On one bottle bottom, thread a loop of string or ribbon from inside outwards. This will create a hook to hang-up your bauble.

4. On the other bottle bottom, add a fancy tassel or bunch of ribbons through the hole. This can be made from crisp packets, from left over fabrics or wool - whatever you can recycle!

5. Onto a stick, attach your Queen-inspired picture or object.

6. Secure the stick inside of the tassel bottle. (We wedged it into the tassel hole and added some sticky tape).



7. Optionally, you could fill the rest of the bauble with other pictures or create a snow-globe with other shredded materials.

8. Put the top half on and hang up!

You will need:

- 2 x clear plastic bottles per bauble (the same size)
- Scissors
- Ribbon or string
- Tassels from shredded crisp packets, ribbons or left-over fabrics or wool
- 1 x stick per bauble from a wooden skewer, tooth-pick or straw.
- Picture/object(s) inspired by the Queen (no bigger than your bottle)
- Optional shredded materials, like paper, crisp packets, dried flowers
- Glue or sticky tape

Don't discard the long tops of your bottles! Use them to make more decorations:

Once you have decorated your bottle punch holes all around the bottom opening. Tie any unwanted colourful ribbon, wool, string or long thin strips of fabric or even plastic bags that you have found through the holes at the bottom to make tassels.

To decorate stick your royal imagery - carriages, flags, tiaras and crowns to the inside of the bottle - or hang from string down from the lid.



TREE CROWNS

If you would prefer to create natural tree decorations to be extra green, try making these wonderful crowns which can hang in your tree. Let's start collecting materials!



You will need:

- To go on a walk and collect some twigs, leaves, flowers or any other beautiful natural materials that catch your eye
- A length of cardboard
- Scissors
- Glue, needle/thread or tape
- A pencil
- Garden twine or string
- (optional) gold paint or gold leaf

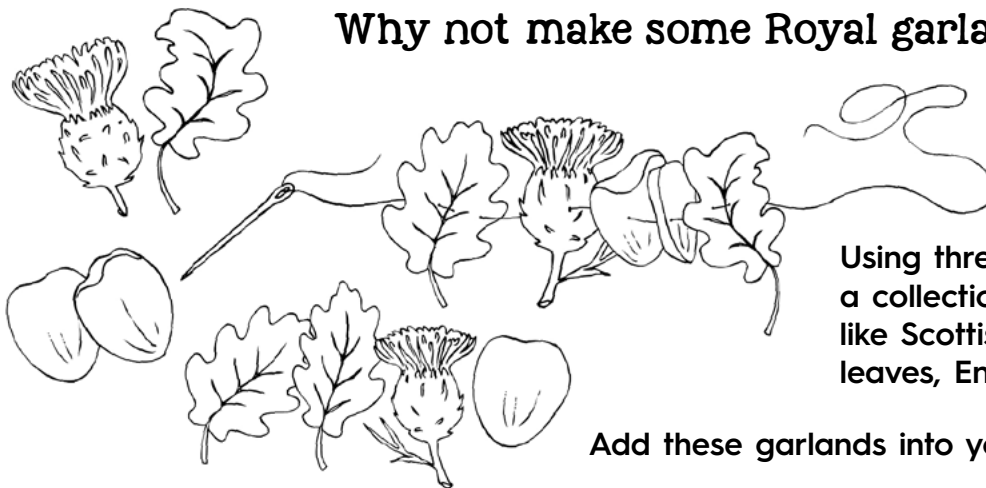


1. Cut a strip of cardboard (making sure the card's corrugation is vertical)
2. Arrange your natural treasures on the cardboard strip.
 - Try and make some of your treasures stick above the top edge like crown points
 - Ensure the bottom edge has a clear edge.
 - Leave a small section of cardboard at one end undecorated.
3. Using glue (hot-glue guns are great for this job), needle & thread, or tape attach your treasures to the cardboard.

4. Optionally, highlight the tips of your crown or key 'jewels' with a little gold paint/leaf.
5. Make 3-4 holes along the top of the cardboard strip.
6. When fixed, roll-up the cardboard strip into a crown, attaching the ends together.
7. Thread string into the holes to hang up your crown in the tree.

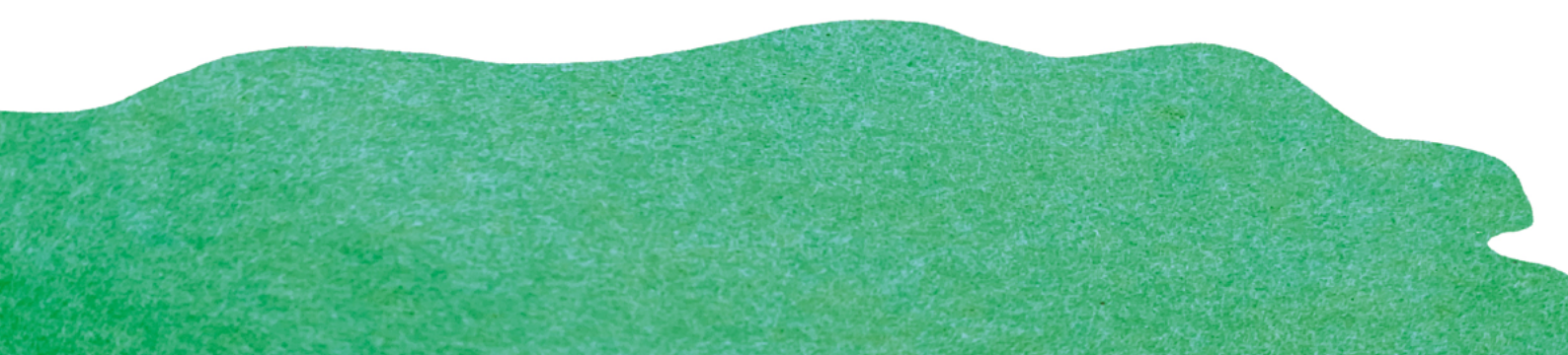


Why not make some Royal garlands...



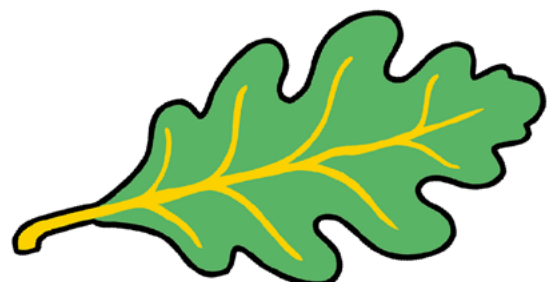
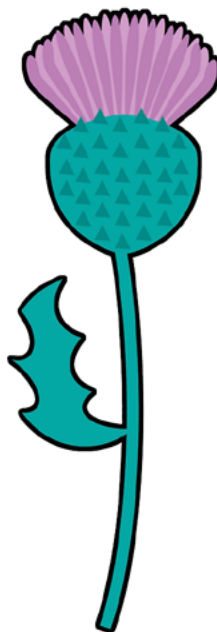
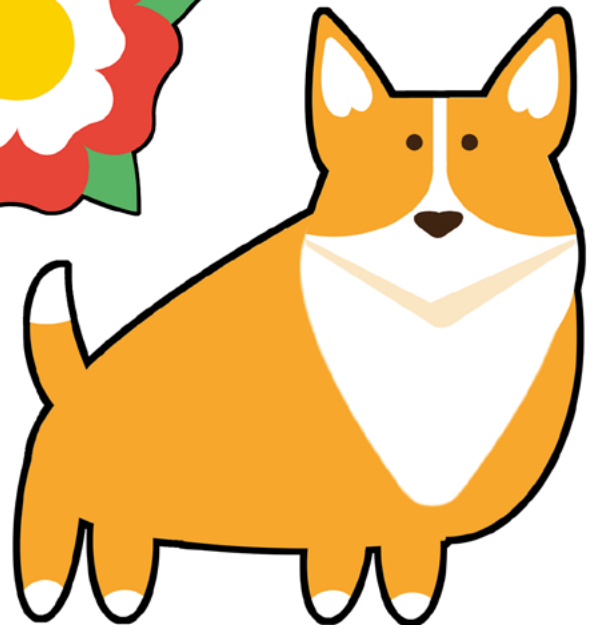
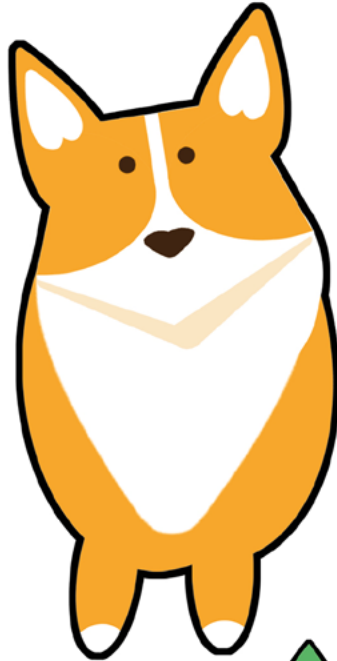
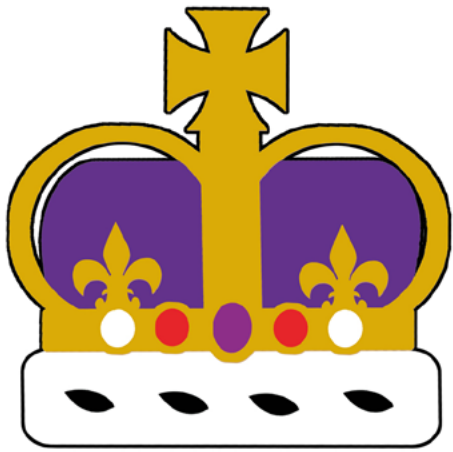
Using thread and needle, string up a collection of natural treasures, like Scottish thistles, Royal oak leaves, English rose petals.

Add these garlands into your tree.



Templates

Cut out these images to use on your creations - you could even photocopy them or scan and print if you need more.





How to enter

To enter a tree and be considered as an official artwork on The Ashford Tree Trail, you will need to tell us about your tree and provide some photos of your creation.

You can do this by simply completing the online submission form and attaching up to 3 x good quality photos via this link:
www.ashford.gov.uk/ashford-tree-trail-entries

We highly recommend that you send your form and photos before 2 June 2022 for your tree to be selected and featured on the Tree Trail.

The Tree Trail will be live from 2 June 2022 for the Queen's Platinum Jubilee celebrations.

For more information about the Tree Trail project, including downloadable maps and virtual maps, please visit

www.ashford.gov.uk/ashford-tree-trail

Terms & Conditions

- We cannot guarantee to include all entries due to limited spaces on the virtual map.
- We encourage you to read the official Tree Trail Creative Pack for guidance. In particular we are looking for decorated trees that celebrate the Queen's Jubilee by design and use recycled materials.
- We can only accept 1 tree per household/business/group.
- We will not consider any submissions to the Tree Trail after 26 June 2022.

This pack has been created by artists from
www.animateartscompany.com

animate
arts
company